


January: KEEP CALM

Designed by Becca Bomgardner



Please respect my creative rights! **You are welcome to sell finished physical crochet items** you make from my patterns online or locally. **You MAY NOT create for sale or free any patterns which use my designs in any way (in whole or parts).** This pattern cannot be resold, rewritten or shared in any way, in whole or in parts, including YouTube tutorials. Thank you!

Pattern Notes

- This pattern is worked row by row (no turning).
- **If you haven't already...** please look over the stitch list on page 3 before continuing with these pattern notes or you may be confused.
- **You'll see that you are working a chain space after your first, and before your last, stitch (part of the BE and EE).** This is to set up the envelope border so you have no ends to sew in. The chain spaces will be what you stitch into as you border the sides of the blanket. The first & final sc (along with all the ends) will be enclosed in the envelope border.
- **Excluding the BE and EE, all other sc are worked into the BLO** unless otherwise noted.
- This pattern comes with a graph, located on the final two pages and also a separate graph file for easy zooming on a screen or tablet, if needed.
- **Front Post DDC on the lettering** - this is how I originally created my blocks and so it is how the pattern is written, but if you prefer to use normal ddc in place of FPddc you certainly can. I do recommend using the FPddc on diagonals though, then your front loops won't be pulled up too much by the diagonal stretch.
- **Using hook & yarn weight noted below, block size is 17 by 21 inches (43 by 53 cm).**
- **The most awesome thing you can do to support this free CAL is to post pictures on social media!** When you do, please tag @mayhemandmajesty IN your Instagram photo, rather than tagging me in the caption **and** also use #2025KeepCalmMosaicCAL #MayhemandMajestydesigns in your hashtags. **THANK YOU!!!** 

Yarn Amounts - for Worsted Weight (#4 / Aran / 10ply)

10% has been added to all yarn amounts to provide a cushion for looser stitchers. DK will take less than worsted, so if you prefer DK and a 4mm hook you can safely plan by the below numbers have have more than enough yarn!

- 5.5mm Hook
- Stitch Markers

For this block you will need:

- Background Color (odd rows): 220 yards (201 m)
- Design Color (even rows): 120 yards (110 m)
- Envelope Border: 250 yards (228 m)

Graph Symbols & Stitches Used in this Pattern - US Crochet Terms



ch



sc



sc



sc in BOTH loops



ddc



ddc



fpddc



ddc-L



fpddc-L



ddc-R



fpddc-R



ddc-2R



fpddc-2R



ddc-2L = ddc 2sts to the Left



fpddc-2R = Front post ddc 2sts to the Right



fpddc-2-tog

st(s) - stitch(es)

ch(s) - chain(s)

BLO - back loop only

FL - front loop

fp - front post

BE - beginning edge = sc in both loops, ch1, sk next st

EE - ending edge = ch1, sk next st, sc in both loops of final st

sc - single crochet

dc - double crochet

ddc - drop double crochet = dc made into the FL of the st 2 rows below

-R = 2 rows below and 1 st to the right

-2R = 2 rows below and 2 sts to the right

-L = 2 rows below and 1 st to the left

-2L = 2 rows below and 2 sts to the left

fpddc - ddc made around the FP of the ddc below

-R = below and 1 st to the right

-2R = below and 2 sts to the right

-L = below and 1 st to the left

-2L = below and 2 sts to the left

-2togR&L = below 1 st to the right & below 1 st to the left made as a dc2tog

Optional Stitches & Techniques

Standing DC (or sc) - [Photo](#) or [Video Tutorial](#)

Stacked DC - [Photo Tutorial](#)

LDC - Linked double crochet - [LDC for an Envelope Border Video Tutorial](#)

Chain 56; begin Row 1 in the 2nd ch from hook, working in the 'back bumps' of the chain.

Row 1: BE, 51sc, EE

Row 2: BE, 51sc, EE

Row 3: BE, 4ddc, (sc, 5ddc)x7, sc, 4ddc, EE

Row 4: BE, 4sc, (ddc, 5sc)x7, ddc, 4sc, EE

Row 5: BE, (3ddc, 3sc)x8, 3ddc, EE

Row 6: BE, (3sc, ddc, sc, ddc)x8, 3sc, EE

Row 7: BE, sc, (ddc, 2sc)x16, ddc, sc, EE

Row 8: BE, (ddc, sc, ddc, 3sc)x8, ddc, sc, ddc, EE

Row 9: BE, (3sc, 3ddc)x8, 3sc, EE

Row 10: BE, sc, (ddc, 5sc)x8, ddc, sc, EE

Row 11: BE, ddc, (sc, 5ddc)x8, sc, ddc, EE

Row 12: BE, 51sc, EE

Row 13: BE, 4ddc, (sc, 5ddc)x7, sc, 4ddc, EE

Row 14: BE, 51sc, EE

Row 15: BE, 4ddc, sc, 9ddc, sc, 3ddc, 7sc, 3ddc, sc, 7ddc, sc, 3ddc, 5sc, 6ddc, EE

Row 16: BE, 4sc, ddc, 9sc, ddc, 9sc, ddc, 3sc, ddc, 7sc, ddc, 2sc, ddc-L, 5sc, ddc-R, 5sc, EE

Row 17: BE, 4ddc, (sc, 9ddc)x2, sc, 3ddc, sc, 7ddc, sc, 2ddc, sc, 5ddc, sc, 5ddc, EE

Row 18: BE, 4sc, (fpddc, 9sc)x2, fpddc, 3sc, fpddc, 7sc, fpddc, 9sc, fpddc-R, 4sc, EE

Row 19: BE, 4ddc, (sc, 9ddc)x2, sc, 3ddc, sc, 7ddc, sc, 9ddc, sc, 4ddc, EE

Row 20: BE, 4sc, (fpddc, 9sc)x2, fpddc, 3sc, fpddc, 7sc, fpddc, 9sc, fpddc, 4sc, EE

Row 21: BE, 4ddc, (sc, 9ddc)x2, sc, 3ddc, sc, 7ddc, sc, 9ddc, sc, 4ddc, EE

Row 22: BE, 4sc, (fpddc, 9sc)x2, fpddc, 3sc, fpddc, 7sc, fpddc, 9sc, fpddc, 4sc, EE

Row 23: BE, (4ddc, sc.)x3, 9ddc, sc, 3ddc, 9sc, 9ddc, sc, 4ddc, EE

Row 24: BE, 4sc, fpddc, 3sc, ddc-L, sc, ddc-R, 3sc, fpddc, 9sc, fpddc, 3sc, fpddc, 7sc, fpddc, 9sc, fpddc, 4sc, EE

Row 25: BE, 4ddc, sc, 3ddc, sc, ddc, sc, 3ddc, sc, 9ddc, sc, 3ddc, sc, 7ddc, sc, 9ddc, sc, 4ddc, EE

Row 26: BE, 4sc, fpddc, 2sc, fpddc-L, 3sc, fpddc-R, 2sc, fpddc, 9sc, fpddc, 3sc, fpddc, 7sc, fpddc, 9sc, fpddc, 4sc, EE

Row 27: BE, 4ddc, sc, 2ddc, sc, 3ddc, sc, 2ddc, sc, 9ddc, sc, 3ddc, sc, 7ddc, sc, 9ddc, sc, 4ddc, EE

Row 28: BE, 4sc, fpddc, sc, fpddc-L, 5sc, fpddc-R, sc, fpddc, 9sc, fpddc, 4sc, fpddc-R, 5sc, fpddc-L, 9sc, fpddc-L, 5sc, EE

Row 29: BE, 4ddc, sc, ddc, sc, 5ddc, sc, ddc, sc, 9ddc, sc, 4ddc, sc, 5ddc, sc, 3ddc, (sc, 5ddc)x2, EE

Row 30: BE, 4sc, fpddc, fpddc-L, 7sc, fpddc-R, fpddc, 9sc, fpddc, 5sc, fpddc-R, 3sc, fpddc-L, 5sc, ddc-R, 3sc, fpddc-L, 6sc, EE

Row 31: BE, 4ddc, 2sc, 7ddc, 2sc, 9ddc, sc, (5ddc, 5sc)x2, 6ddc, EE

Row 32: BE, 51sc, EE

Row 33: BE, 51ddc, EE

Rows 34: BE, 51sc, EE

Row 35: BE, 51ddc, EE

Row 36: BE, 51sc, EE

Row 37: BE, 13ddc, sc, (3ddc, 7sc)x2, 3ddc, (sc, 6ddc)x2, EE

Row 38: BE, 13sc, (ddc, 9sc)x2,, ddc, 4sc, ddc-R, 5sc, ddc, 6sc, EE

Row 39: BE, 13ddc, (sc, 9ddc)x2, sc, 4ddc, sc, 5ddc, sc, 6ddc, EE

Row 40: BE, 13sc, (fpddc, 9sc)x2, fpddc, 5sc, fpddc-R, 4sc, fpddc, 6sc, EE

Row 41: BE, 13ddc, (sc, 9ddc)x2, sc, 5ddc, sc, 4ddc, sc, 6ddc, EE

Row 42: BE, 13sc, (fpddc, 9sc)x2, fpddc, 6sc, fpddc-R, 3sc, fpddc, 6sc, EE

Row 43: BE, 13ddc, (sc, 9ddc)x2, sc, 6ddc, sc, 3ddc, sc, 6ddc, EE

Row 44: BE, 13sc, (fpddc, 9sc)x2, fpddc, 7sc, fpddc-R, 2sc, fpddc, 6sc, EE

Row 45: BE, 8ddc, 6sc, (5ddc, 5sc)x2, 7ddc, 4sc, 6ddc, EE

Row 46: BE, 6sc, ddc-2L, 6sc, (fpddc, 9sc)x2, fpddc, 6sc, fpddc-L, 3sc, fpddc, 6sc, EE

Row 47: BE, (6ddc, sc)x2, (9ddc, sc)x2, 6ddc, sc, 3ddc, sc, 6ddc, EE

Row 48: BE, (6sc, fpddc)x2, (9sc, fpddc)x2, 5sc, fpddc-L, 4sc, fpddc, 6sc, EE

Row 49: BE, (6ddc, sc)x2, (9ddc, sc)x2, 5ddc, sc, 4ddc, sc, 6ddc, EE

Row 50: BE, (6sc, fpddc)x2, (9sc, fpddc)x2, 4sc, fpddc-L, 5sc, fpddc, 6sc, EE

Row 51: BE, (6ddc, sc)x2, (9ddc, sc)x2, 4ddc, sc, 5ddc, sc, 6ddc, EE

Row 52: BE, 8sc, fpddc-2R, 4sc, (fpddc, 9sc)x2, fpddc, 3sc, fpddc-L, 6sc, fpddc, 6sc, EE

Row 53: BE, 8ddc, 6sc, (3ddc, 7sc)x2, 3ddc, (sc, 6ddc)x2, EE

Row 54: BE, 51sc, EE

Row 55: BE, 4ddc, (sc, 5ddc)x7, sc, 4ddc, EE

Row 56: BE, 51sc, EE

Row 57: BE, ddc, (sc, 5ddc)x8, sc, ddc, EE

Row 58: BE, sc, (ddc, 5sc)x8, ddc, sc, EE

Row 59: BE, (3sc, 3ddc)x8, 3sc, EE

Row 60: BE, ddc, (sc, ddc, 3sc, ddc)x8, sc, ddc, EE

Row 61: BE, sc, (ddc, 2sc)x16, ddc, sc, EE

Row 62: BE, (3sc, ddc, sc, ddc)x8, 3sc, EE

Row 63: BE, (3ddc, 3sc)x8, 3ddc, EE

Row 64: BE, 4sc, (ddc, 5sc)x7, ddc, 4sc, EE

Row 65: BE, 4ddc, (sc, 5ddc)x7, sc, 4ddc, EE

Finishing Background Color Row 66: BE, 51sc in BOTH LOOPS across, EE

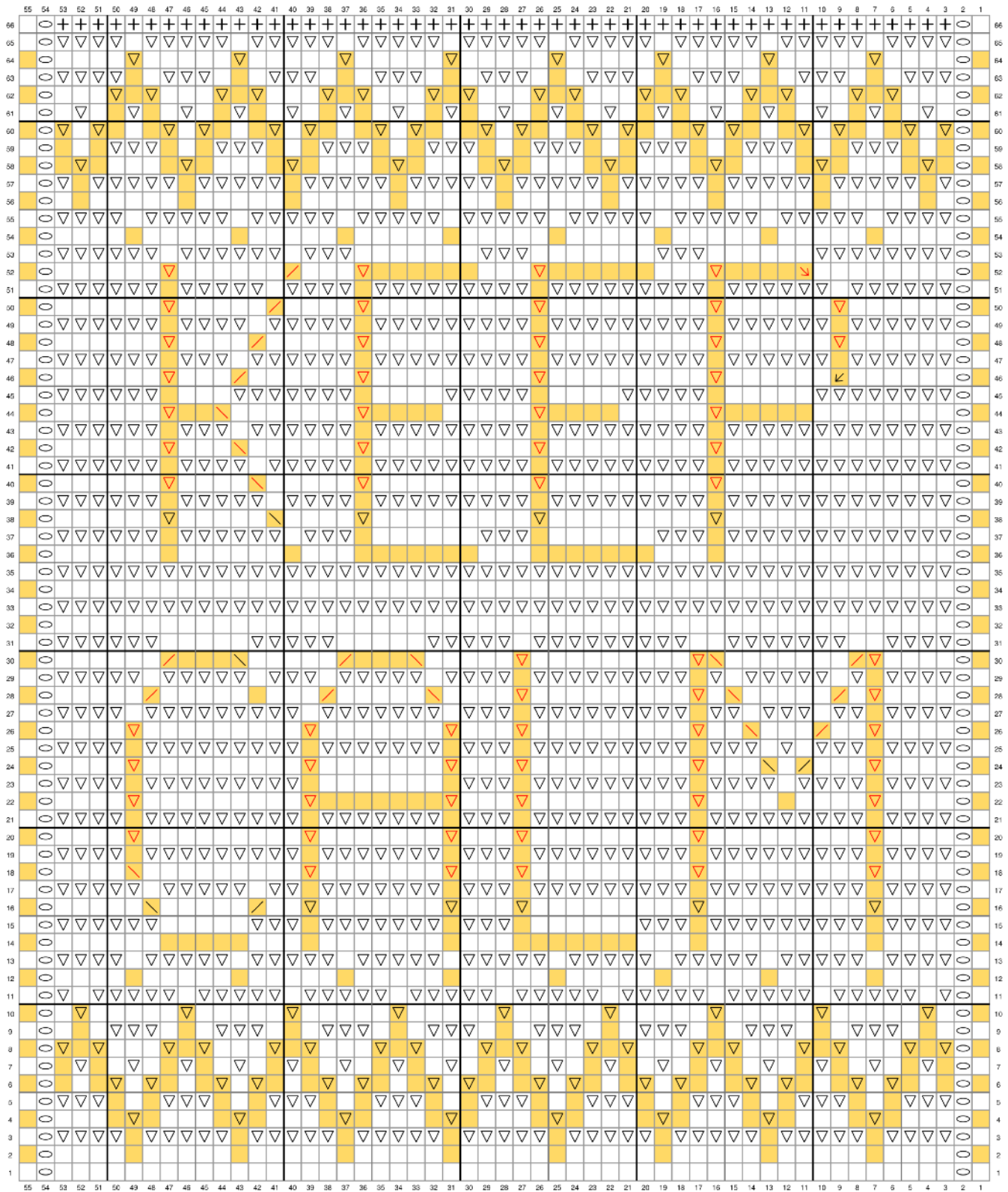
Share your CAL progress & be featured!

Have your CAL block picture featured:

Tag @mayhemandmajesty *in* your photo on IG

Use #2025KeepCalmMosaicCAL on IG

(or do these in the caption if you post on Facebook)



Envelope Border

- **This pattern utilizes an LDC (linked double crochet) Envelope Border**, but you can use regular dc stitches if you prefer. [You can see a video of LDC here](#). My video shows working into the back+3rd loop on the second and following rounds...but this is not necessary and I didn't use that version on this blanket (I just haven't had time to redo the video).

Front Border - worked with the front of the block facing you

Rnd 1: Join border color into the **front loop** of the top right chain space with a standing dc, then work (LDC, ch2, dc, LDC) all into the same back loop. Ldc in the FLO of each sc across the top, (2LDC, ch2, dc, LDC) into the front loop of the ch-sp at the other end. Now work a dc in the FL of each ch-sp down the side; (2LDC, ch2, dc, LDC) into the last ch-sp (this is into the skipped chain of your starting chain), Ldc in the FLO of each ch across the bottom; repeat inside finish the starting corner with a Ldc into the back loop of the ch-sp. Slst into the back loop+3rd loop to join.

Rnds 2-3: Stacked dc in same st as joining. Ldc around, working (2LDC, ch2, dc, LDC) in the corner ch sps. Slst to join. Sew in the end at the end of round 3.

Back Border - worked with the back of the block facing you

Rnd 1: Repeat Row 1 above, working into the **back loop** of the ch sps and sc sts all around.

Rnds 2-3: same as front border above

Trim all ends to 2-3 inches long. I like to cut mine to be as long as the border is thick (it's also an easy cutting line).

Closing Round: As you work this round, keep your ends laid down inside.

Join border color into the top right (or top left for lefties) ch2 space with a standing sc (work this standing sc around both ch2 sps) then work 4sc more into the same corner space.

Now **sc along the side into the two inside most loops when the borders are sandwiched together.**

Work 5sc in the next corner ch2 sp (around both ch2 spaces). Work in this manner around your blanket. Join to first sc with an invisible join. Sew in final end well - as it does not have a knot.

.....
.....
.....
Share your CAL progress & be featured!
.....
.....

Have your CAL block picture featured:

Tag @mayhemandmajesty in your photo on IG

Use #2025KeepCalmMosaicCAL on IG

(or do these in the caption if you post on Facebook)

.....
.....