

## Tapestry Overlay Mosaic Crochet How to Video

This tutorial uses US crochet stitches and terms. This video tutorial assumes you already know how to do overlay mosaic crochet, including diagonal stitches. If you do not, please view my Overlay Mosaic Crochet How To tutorial first. This tapestry overlay mosaic video will quickly walk through a swatch of a coffee bean (this tutorial does not cover the basics of mosaic!) and will cover in detail the negative stitch & color carrying/changing technique used in the tapestry version of my "First Coffee Then Things" Overlay Mosaic pattern.

## Stitches & Terms you should understand before beginning-

**st** - stitch

**sk** - skip

**ch** - chain

**sc** - single crochet

**dc** - double crochet

**BLO** - back loop only

**fp** - front post

**BE** - Beginning Edge (sc in both loops of very first st, ch1, sk next st)

**EE** - Ending Edge (ch1, sk next st, sc in both loops of final st)

**ddc** - dropped double crochet - a regular dc made into the unworked front loop two rows below your current row.

-R = 2 rows below and 1 st to the right

-2R = 2 rows below and 2 sts to the right

-L = 2 rows below and 1 st to the left

-2L = 2 rows below and 2 sts to the left

**fpddc** - ddc made around the front post (fp) of the ddc below

-R = 2 rows below and 1 st to the right

-2R = 2 rows below and 2 sts to the right

-L = 2 rows below and 1 st to the left

-2L = 2 rows below and 2 sts to the left

## Stitches this video tutorial will teach you-

**the negative stitch** = (this is easier shown than written)

**ddc2tog-R** = dc2tog where the first 'leg' of the st is 1 st to the right and the other is directly down

**ddc2tog-L** = dc2tog where the first 'leg' of the st is directly down and the other is 1 st to the left

## Coffee Bean - Tapestry Overlay Mosaic Version

**Odd Rows:** Background & if CC: Bean Filler

**Even Rows:** Bean Outline

Chain 29, begin Row 1 in the second chain from your hook - work Row 1 in to the 'back bumps' of the chain.

**Row 1:** BE, 25sc, EE

**Row 2:** BE, 25sc, EE

**Row 3:** BE, 25ddc, EE

**Row 4:** BE, 25sc, EE

\***Row 5:** BE, 5ddc, ddc2tog-L, 13sc-CC, ddc2tog-R, 5ddc, EE

**Row 6:** BE, 5sc, ddc-2L, 13sc, ddc-2R, 5sc, EE

\***Row 7:** BE, 5ddc, sc-CC, 13ddc-CC, sc-CC, 5ddc, EE

**Row 8:** BE, 4sc, ddc-L, 15sc, ddc-R, 4sc, EE

\***Row 9:** BE, 4ddc, sc, 8sc-CC, 7ddc-CC, sc, 4ddc, EE

**Row 10:** BE, 4sc, ddc, 7sc, ddc, 7sc, ddc, 4sc, EE

\***Row 11:** BE, 4ddc, sc, 7ddc-CC, 8sc-CC, sc, 4ddc, EE

**Row 12:** BE, 5sc, ddc-R, 13sc, ddc-L, 5sc, EE

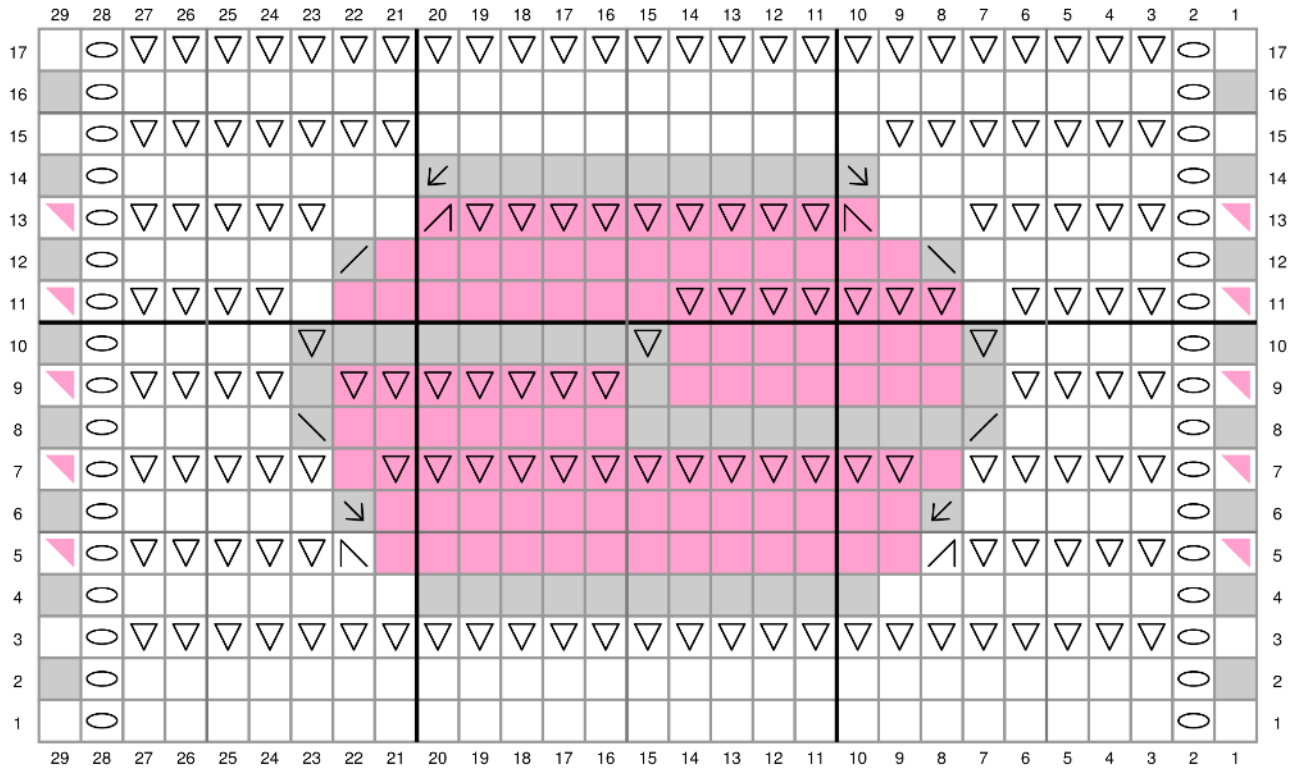
\***Row 13:** BE, 5ddc, 2sc, ddc2tog-R-CC, 9ddc-CC, ddc2tog-L-CC, 2sc, 5ddc, EE


**Row 14:** BE, 7sc, ddc-2R, 9sc, ddc-2L, 7sc, EE

**Row 15:** BE, 7ddc, 11sc, 7ddc, EE

**Row 16:** BE, 25sc, EE

**Row 17:** BE, 25ddc, EE



 2 colors used this row

 ch


 sc


 sc

 sc in CC


 ddc


 ddc

 ddc in CC

 ddc-L


 ddc-2L


 ddc2tog-L

 ddc2tog-L in CC

 ddc-R

 ddc-2R

 ddc2tog-R

 ddc2tog-R in CC