

Overlay Mosaic Crochet How to Video

This tutorial uses US crochet stitches and terms. This video tutorial assumes you already know how to make the three most basic crochet stitches (ch, sc, and dc). Other stitches and terms below are covered in the video.

Stitches & Terms you should understand before beginning-

st - stitch

sk - skip

ch - chain

sc - single crochet

dc - double crochet

Stitches & Terms this tutorial will teach you-

BLO - back loop only

fp - front post

BE - Beginning Edge (sc in both loops of very first st, ch1, sk next st)

EE - Ending Edge (ch1, sk next st, sc in both loops of final st)

ddc - dropped double crochet - a regular dc made into the unworked front loop two rows below your current row.

-R = 2 rows below and 1 st to the right

-2R = 2 rows below and 2 sts to the right

-L = 2 rows below and 1 st to the left

-2L = 2 rows below and 2 sts to the left

-2tog-R = dc2tog where the first 'leg' of the st is 1 st to the right and the other is directly down

-2tog-L = dc2tog where the first 'leg' of the st is directly down and the other is 1 st to the left

fpddc - ddc made around the front post (fp) of the ddc below

-R = 2 rows below and 1 st to the right

-2R = 2 rows below and 2 sts to the right

-L = 2 rows below and 1 st to the left

-2L = 2 rows below and 2 sts to the left

About Overlay Mosaic Patterns

- **Overlay mosaic patterns are worked row by row (no turning).** This creates many ends, but using an envelope border removes the need to sew any of them in.
- The written instructions follow the graph right to left (as a right handed crocheter works).
- **What if I hold the hook in my LEFT hand?** If you are left handed, you can still follow this pattern & tutorial, but you will need to work your diagonal stitches opposite from mine (if I work a “ddc-L” then you'd work a “ddc-R”). This means the picture you get is mirrored to my sample of the coffee bean swatch. Most of the time mirroring won't bother the look of a design. For my patterns where there is wording, I include a separate Leftie Version for the lettered portion, but otherwise I simply note that your diagonals need to be made as the opposite of what's written. **OR** If this feels confusing, you can just skip the written pattern altogether and just follow the graph, reading it left to right (the same direction as you crochet).
- **You'll see that you are working a chain space after your first, and before your last, stitch (part of the BE and EE).** This is to set up the edges of your blanket for an envelope border so you have no ends to sew in. The chain spaces will be what you stitch into as you border the sides of your blanket. This tutorial will not cover the envelope border portion, but you can find my video for envelope borders here.
- **Excluding the BE and EE, all other sc are worked into the BLO.** This frees up the front loop of stitches to be worked into using the overlay mosaic's ddc “dropped double crochet” stitches.

Overlay Mosaic Coffee Bean Swatch

Chain 30, begin Row 1 in the second chain from your hook - work Row 1 in to the 'back bumps' of the chain.

Row 1: BE, 25sc, EE

Row 2: BE, 25sc, EE

Row 3: BE, 25ddc, EE

Row 4: BE, 25sc, EE

Row 5: BE, 7ddc, 11sc, 7ddc, EE

Row 6: BE, 5sc, ddc-2L, 13sc, ddc-2R, 5sc, EE

Row 7: BE, 5ddc, sc, 13ddc, sc, 5ddc, EE

Row 8: BE, 4sc, fpddc-L, 15sc, fpddc-R, 4sc, EE

Row 9: BE, 4ddc, 9sc, 7ddc, sc, 4ddc, EE

Row 10: BE, 4sc, (ddc, 7sc)x2 then ddc, 4sc, EE

Row 11: BE, 4ddc, sc, 7ddc, 9sc, 4ddc, EE

Row 12: BE, 5sc, fpddc-R, 13sc, fpddc-L, 5sc, EE

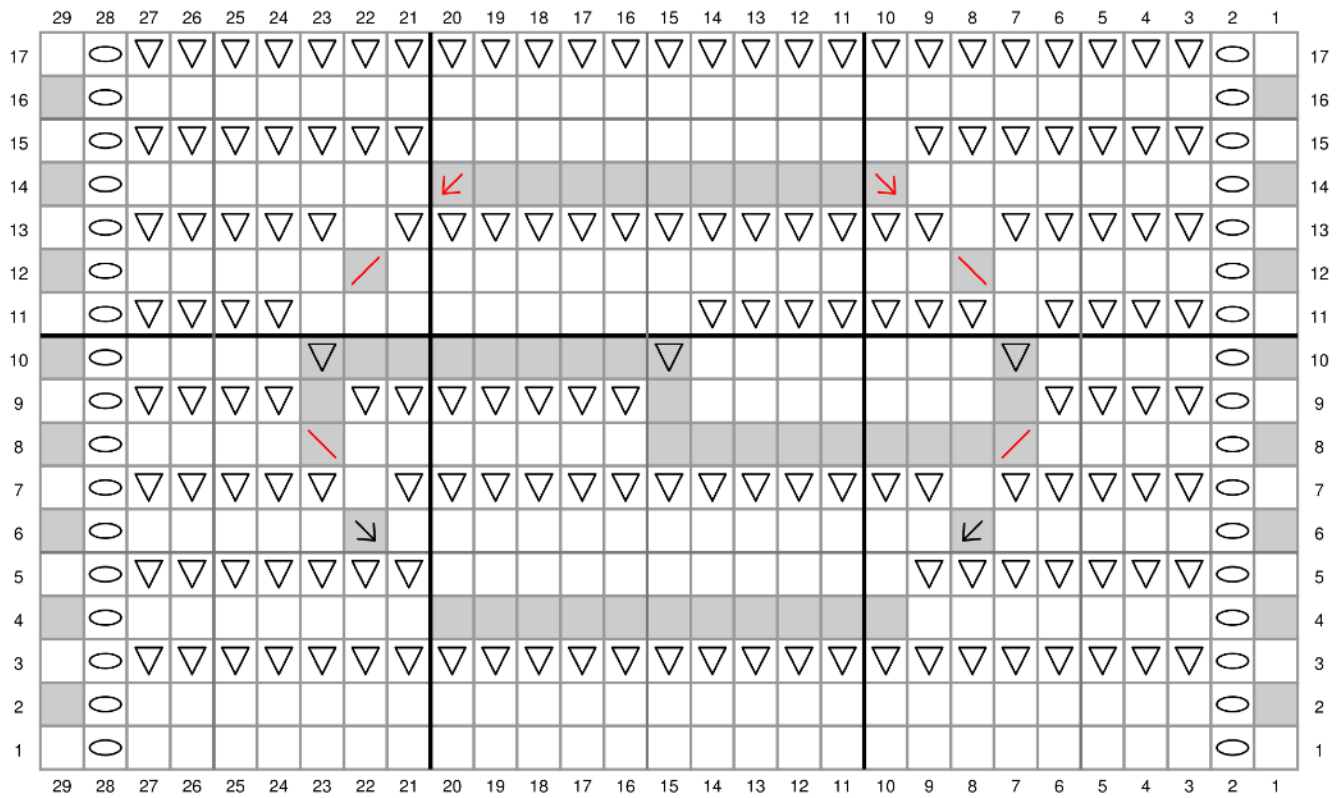
Row 13: BE, 5ddc, sc, 13ddc, sc, 5ddc, EE

Row 14: BE, 7sc, fpddc-2R, 9sc, fpddc-2L, 7sc, EE

Row 15: BE, 7ddc, 11sc, 7ddc, EE

Row 16: BE, 25sc, EE


Row 17: BE, 25ddc, EE




 ch

 sc

 sc


 dropped double crochet = a regular dc made into the unworked front loop two rows below your current row


 dropped double crochet


 ddc 2 rows below and 1 st to the left


 ddc 2 rows below and 2 sts to the left


 ddc 2 rows below and 1 st to the right


 ddc 2 rows below and 2 sts to the right

 front post ddc = a ddc made around the post the the ddc directly below

 fpddc 1 st to the right

 fpddc 2 sts to the right

 fpddc 1 st to the left

 fpddc 2 sts to the left