

#2020FILETCAL - NOVEMBER - CUPPA LOVE

Designed by Becca Bomgardner



Please respect my creative rights! **You are welcome to sell finished physical crochet items** you make from my patterns online or locally. **You MAY NOT create for sale or free any patterns which use my designs in any way (in whole or parts).** This pattern cannot be resold, rewritten or shared in any way, in whole or in parts, including YouTube tutorials. Thank you!

2020 Filet CAL November ~ Cuppa Love ~ © 2020 Becca Bomgardner of Mayhem & Majesty LLC

Yarn & Supplies

(to save ink and paper each month, I'll refer you to the CAL Intro file for more info on yarn amounts for each CAL option)

Terms & Stitches - US Terms

st(s) - stitch(es)

ch - chain

sk - skip

dc - double crochet

sc - single crochet

sl st - slip stitch

rep - repeat

Numerical Filet - "How To" Guide

(to save ink and paper each month, I'll refer you to the CAL Intro file where you can find this handy sheet)

Special Stitch - Foundation Row Crochet

FDC - Foundation Double Crochet

Ch3, yo and insert hook into third chain from hook, pull up a loop (3 loops on hook). *Yo and pull through 1 loop (this creates the base stitch (chain) for the next fdc), you should still have 3 loops on your hook. Now complete a dc stitch (yo and pull through 2 loops, yo and pull through 2 loops again to complete the dc stitch). To start the next stitch, yo and insert hook into the 'v' of the base stitch, yo and pull up a loop (chain created), now complete a dc stitch as before. Continue this sequence for the number of stitches in your desired width.

THE CHAIN 3 at the beginning of your Foundation Row council like this: 1 chain is the chain stitch and the other two chains are your first DC of Row 1.

Good video tutorial of FDC by Gleeful Things: <https://www.youtube.com/watch?v=5t691HnQpBM>

Making Color Blocks in a Panel (changing colors at the repeats)

You can change colors at each repeat to create blocks of colored designs without having to join up individual blocks for a colorful blanket!

You will do this with the LAST stitch of your repeat (or the last stitch you want in your current color).

Join a new color, or change from one color to another, by making the last dc stitch as follows (we'll call the colors A and B):

1. With color A, yarn over (yo), insert hook into , yo and pull through work (3 loops of color A on hook).
2. Still with yarn A, yo and pull through two loops on hook (2 loops of yarn A on hook).
3. Drop yarn A, pick up yarn B. Yo with B and pull through two loops on hook (1 loop of yarn B on hook).
4. Now just work your next repeat section in your new color!
5. When you come back across and need to change colors again, just follow the same process.

CUPPA LOVE BLOCK

This no-steam version is designed to match with other CAL blocks, having 3 rows of plain dc on top and bottom. You COULD make the steam version (last pattern in pack) instead, but you would need to omit the 4th row of the steam to get only 22 rows total.

Row 1: FDC 43

Alternately, chain 44 and dc in 3rd ch from hook and in each across. The ch2 at the beginning counts as a dc - 43 sts.

Rows 2-3: Dc across (43 sts)

Row 4: 5 , (1 ,) x13 then 11

Row 5: 7 , 1 , 1 , 25 , 5

Row 6: 5 , 25 , 5 , 5

Row 7: 5 , 5 , 25 , 5

Row 8: 5 , 25 , 5 , 5

Row 9: 5 , 5 , 8 , 1 , 3 , 1 , 8 , 5

Row 10: 5 , 7 , 4 , 4 , 7 , 5 , 5

Row 11: 6 , 4 , 7 , 9 , 7 , 5

Row 12: 5 , 8 , 7 , 8 , 3 , 7

Row 13: 9 , 1 , 10 , 3 , 10 , 5

Row 14: 5 , 12 , 12 , 11

Row 15: 11 , 25 , 5

Row 16: 6 , 23 , 12

Row 17: 14 , 19 , 8

Row 18: 10 , 15 , 16

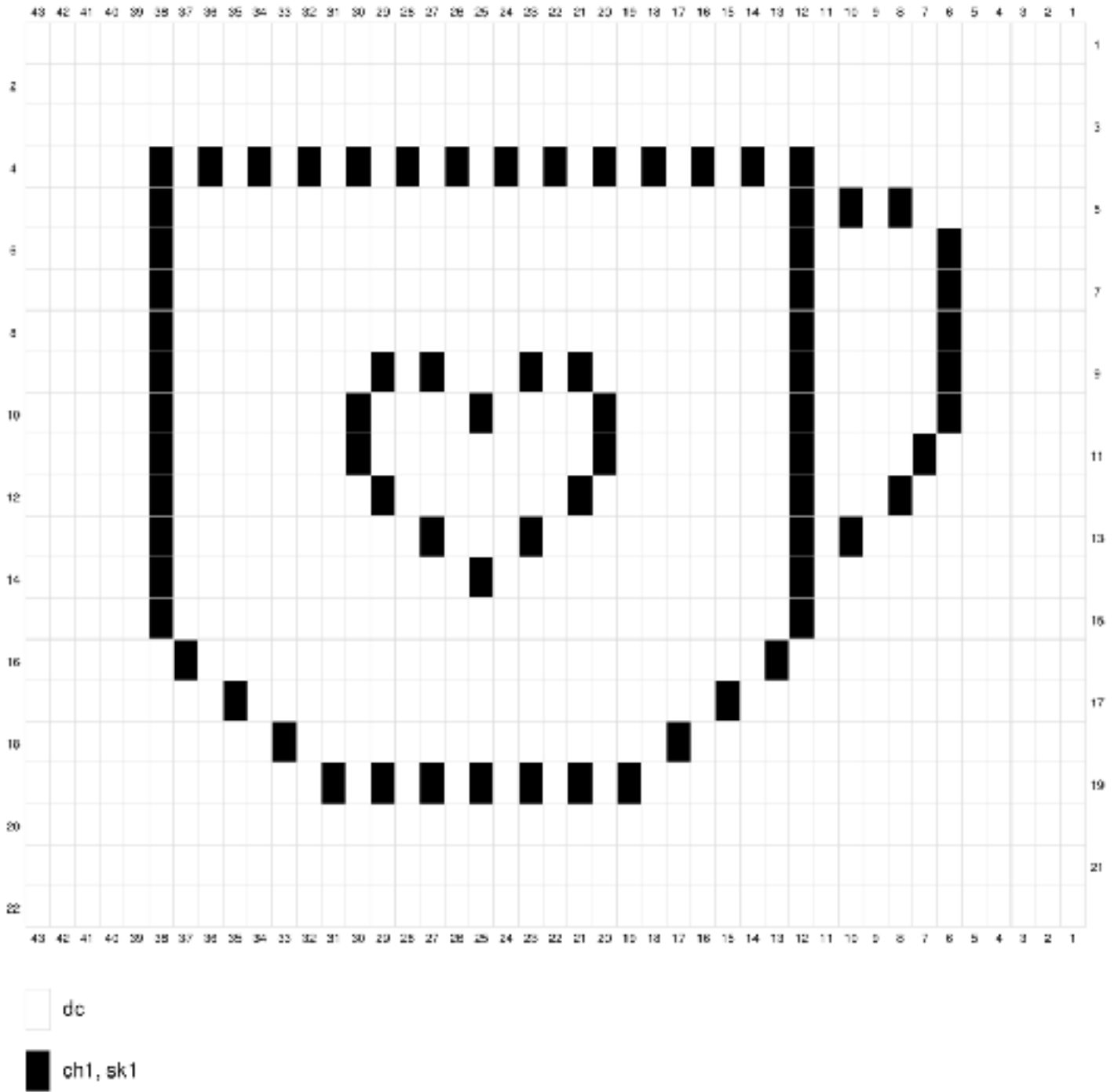
Row 19: 18 , (1 ,) x6 then 12

Rows 20-22: Dc across (43 sts); do not finish off!

Row 23/Rnd 1 - Ch1 and rotate (not turn) to work down the left side of your block. *Make 2sc around the post of each dc down the side (44sc). Rotate to work along row. 2sc in first stitch (first sc is the corner - mark it), sc 20, 2sc in next st, sc 20, 2sc in the last stitch (last sc is the corner - mark it)* Repeat between the * then sl st to your first sc and finish off.

Cuppa Love Block Graph

(worked top down)



2020 BLANKET - NOVEMBER PANEL - no steam

This pattern is for one panel of a twin-sized bed blanket at approximately 54" by 80" using DK yarn. You will add the rows for each new design every month for a total of 12 different of designs and 214 rows.

...Continued from October-

Place stitch markers as you make Row 180 in stitch 4, 43, 82, 121, 160, 199

Row 180: Dc across

Row 181: (5 , (1 ,) x13 then 7) x6 then 4

Row 182: 4 (3 , 1 , 1 , 25 , 5) x6

Row 183: (5 , 25 , 5 , 1) x6 then 4

Row 184: 4 (1 , 5 , 25 , 5) x6

Row 185: (5 , 25 , 5 , 1) x6 then 4

Row 186: 4 (1 , 5 , 8 , 1 , 3 , 1 , 8 , 5) x6

Row 187: (5 , 7 , 4 , 4 , 7 , 5 , 1) x6 then 4

Row 188: 4 (2 , 4 , 7 , 9 , 7 , 5) x6

Row 189: (5 , 8 , 7 , 8 , 3 , 3) x6 then 4

Row 190: 4 (5 , 1 , 10 , 3 , 10 , 5) x6

Row 191: (5 , 12 , 12 , 7) x6 then 4

Row 192: 4 (7 , 25 , 5) x6

Row 193: (6 , 23 , 8) x6 then 4

Row 194: 4 (10 , 19 , 8) x6

Row 195: (10 , 15 , 12) x6 then 4

Row 196: 4 (14 , (1 ,) x6 then 12) x6

Row 197: Dc across (238 sts). If you're doing one color, put a marker in your blanket so it doesn't unravel. If you plan to change colors, finish off this color now.

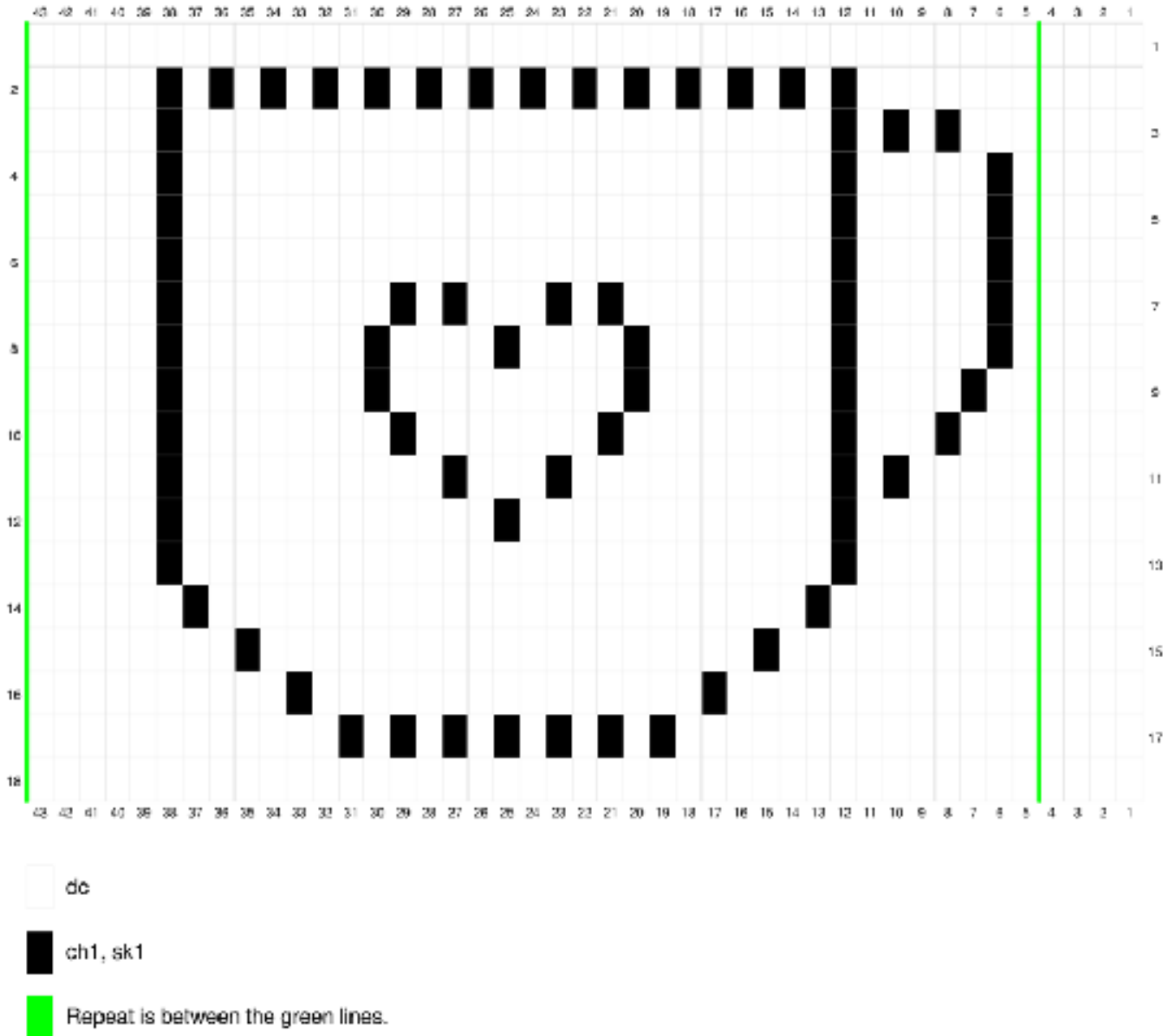


Share your CAL progress with us on IG - #2020filetCAL

Only 1 more month to go!

2020 Blanket November Panel Graph - Venti Cuppa, no Steam

(worked top down)



CUPPA LOVE BLANKET

- These patterns can be worked with any weight yarn and hook.
- **This pattern can be increased/decreased** in multiples of 43 stitches across and 23 rows up to make any size blanket.
- One Cuppa is about 9 inches in width and height.
- **I recommend making a swatch** (one full graph picture of either design) with your desired yarn and hook. Measure to decide how many repeats you need to get the blanket size you want AND to accurately determine your yarn amounts.
- **Yarn amounts** are below and given for ONE cup repeat, so you can calculate your yarn needs based on the size of your intended blanket.

Yarn & Supplies - Cuppa Love (with Steam)

- 107 yards DK yarn to make **one** Cuppa Love - **multiply this amount by how many designs wide you'd like your blanket to be.**
- 117 yards DK yarn to make a Cuppa Love Block with the added sc border
- 4.5mm hook
- Simple Border yarn amount - 150 yards for a blanket that is 4 designs wide by 4 designs high.
- Stitch markers

CUPPA LOVE BLOCK with steam

(worked bottom up)

Row 1: FDC 43

Alternately, chain 44 and dc in 3rd ch from hook and in each across. The ch2 at the beginning counts as a dc - 43 sts.

Row 2: 12 , (1 ,) x6 then 18

Row 3: 16 , 15 , 10

Row 4: 8 , 19 , 14

Row 5: 12 , 23 , 6

Row 6: 5 , 25 , 11

Row 7: 11 , 12 , 12 , 5

Row 8: 5 , 10 , 3 , 10 , 1 , 9

Row 9: 7 , 3 , 8 , 7 , 8 , 5

Row 10: 5 , 7 , 9 , 7 , 4 , 6

Row 11: 5 , 5 , 7 , 4 , 4 , 7 , 5

Row 12: 5 , 8 , 1 , 3 , 1 , 8 , 5 , 5

Row 13: 5 , 5 , 25 , 5

Row 14: 5 , 25 , 5 , 5

Row 15: 5 , 5 , 25 , 5

Row 16: 5 , 25 , 1 , 1 , 7

Row 17: 11 , (1 ,) x13 then 5

Row 18: dc across (43 sts)

Row 19: 18 , 5 , 5 , 12

Row 20: 13 , 5 , 5 , 17

Row 21: 18 , 5 , 5 , 12

Row 22: 13 , 5 , 5 , 17

Row 23: dc across (43 sts) —> Making blocks?

Don't cut your yarn! Go to page 15.

panel

FDC a multiple of 43 (or chain a multiple of 43 + 1).

Place stitch markers during row one every 43 sts.

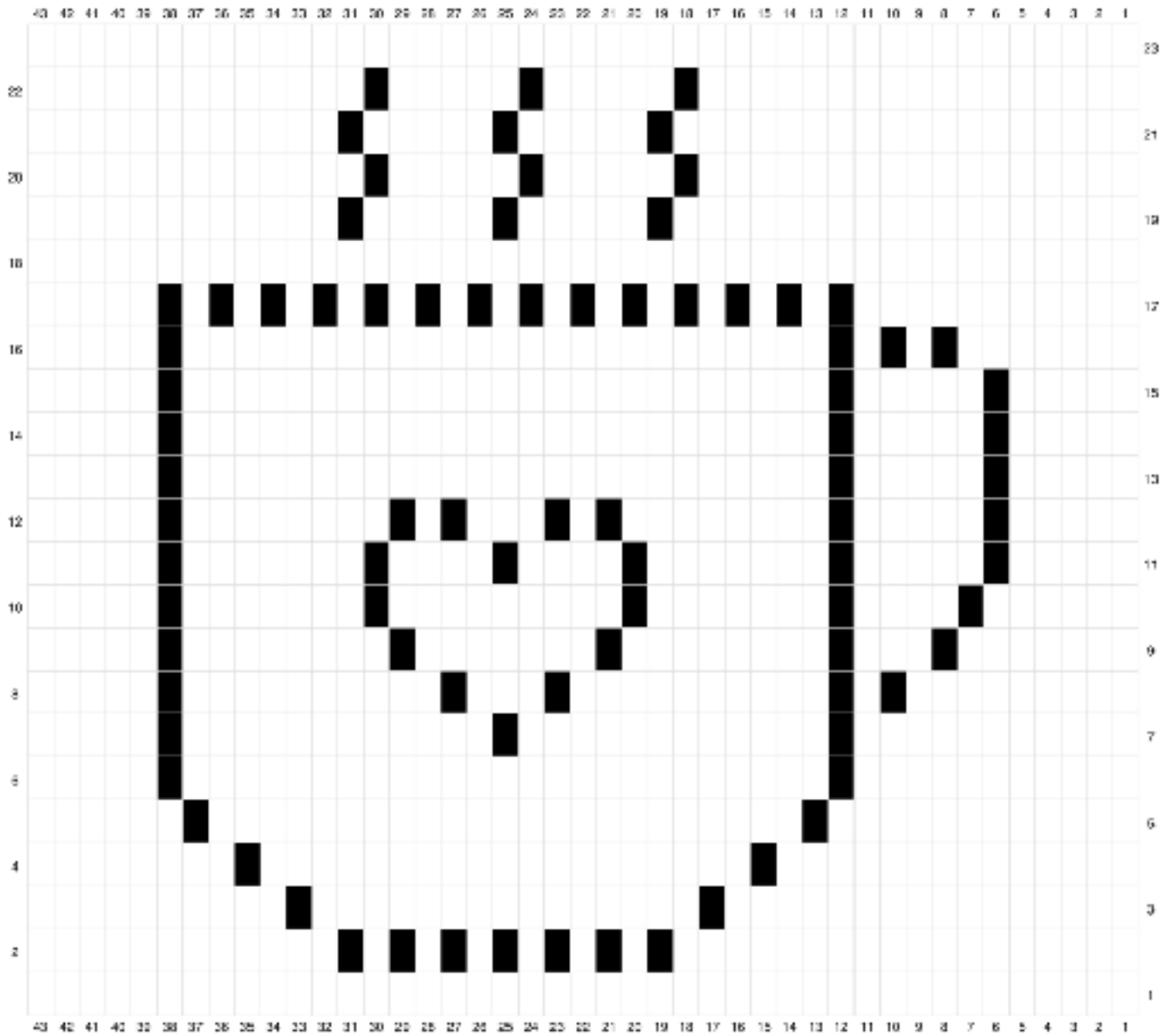
Follow the block pattern to the left, and when you come to a marker, you should have just reached the end of the row pattern. Move your marker into the stitch you just finished. Now just repeat the row over again. Repeat for as many multiples of 43 as you chose.

Color Blocked Panels: see page 3 for how to do this.



Cuppa Love w/ steam Graph

(worked bottom up)



BORDER - BLANKET OR BLOCKS

Joinable Blocks - follow round one of the blanket border below and then join however you like - I turned mine into granny squares and added some granny rounds to make a nice big block.



Rnd 1: Join border color at the top left of your blanket. Ch1 and start by going down the left side of your blanket first, making 2sc around each dc post (or row) down the side. Next you'll do 2sc into the first stitch along the bottom of the blanket (mark the first st of this increase - this is a corner). Now sc in each stitch across to the last chain/FDC where you'll do another 2sc (mark the second st of this increase - this is a corner). Continue in this manner around your block, making sure to make the increase for the next corner. You'll end with 2sc in the last stitch, the second of which is your final corner. Join with a slst to your first sc.

You can add any border you like from here, OR follow the quick & simple one below-

Rnd 2: Ch 3 (counts as first dc here and following), dc next st and in each st around, doing (2dc, ch1, 2dc) into each corner sc. Sl st to top of starting ch3.

Rnds 3-4: Ch 3, turn, dc next st and in each st around, doing (2dc, ch1, 2dc) into each corner sc. Sl st to top of starting ch3.

Rnd 5: Ch1, and then sc around, doing 3sc in the corners.



Share your CAL progress with us on IG with

#cuppaloveblanket

Don't forget to share in our FB Group too!

