

#2020FILETCAL - DECEMBER - O Tannenbaum

Designed by Becca Bomgardner



December

Please respect my creative rights! **You are welcome to sell finished physical crochet items** you make from my patterns online or locally. **You MAY NOT create for sale or free any patterns which use my designs in any way (in whole or parts).** This pattern cannot be resold, rewritten or shared in any way, in whole or in parts, including YouTube tutorials. Thank you!

2020 Filet CAL December ~ O Tannenbaum ~ © 2020 Becca Bomgardner of Mayhem & Majesty LLC

Yarn & Supplies

(to save ink and paper each month, I'll refer you to the CAL Intro file for more info on yarn amounts for each CAL option)

Terms & Stitches - US Terms

st(s) - stitch(es)

ch - chain

sk - skip

dc - double crochet

sc - single crochet

sl st - slip stitch

rep - repeat

Numerical Filet - "How To" Guide

(to save ink and paper each month, I'll refer you to the CAL Intro file where you can find this handy sheet)

Special Stitch - Foundation Row Crochet

FDC - Foundation Double Crochet

Ch3, yo and insert hook into third chain from hook, pull up a loop (3 loops on hook). *Yo and pull through 1 loop (this creates the base stitch (chain) for the next fdc), you should still have 3 loops on your hook. Now complete a dc stitch (yo and pull through 2 loops, yo and pull through 2 loops again to complete the dc stitch). To start the next stitch, yo and insert hook into the 'v' of the base stitch, yo and pull up a loop (chain created), now complete a dc stitch as before. Continue this sequence for the number of stitches in your desired width.

THE CHAIN 3 at the beginning of your Foundation Row council like this: 1 chain is the chain stitch and the other two chains are your first DC of Row 1.

Good video tutorial of FDC by Gleeful Things: <https://www.youtube.com/watch?v=5t691HnQpBM>

Making Color Blocks in a Panel (changing colors at the repeats)

I changed colors at each repeat for my blanket to create blocks of colored designs without having to join up individual swatches of design for a colorful blanket!

You will do this with the LAST stitch of your repeat (or the last stitch you want in your current color).

Join a new color, or change from one color to another, by making the last dc stitch as follows (we'll call the colors A and B):

1. With color A, yarn over (yo), insert hook into , yo and pull through work (3 loops of color A on hook).
2. Still with yarn A, yo and pull through two loops on hook (2 loops of yarn A on hook).
3. Drop yarn A, pick up yarn B. Yo with B and pull through two loops on hook (1 loop of yarn B on hook).
4. Now just work your next repeat section in your new color!
5. When you come back across and need to change colors again, just follow the same process.

O Tannenbaum BLOCK

(worked from the top down)

Row 1: FDC 43

Alternately, chain 44 and dc in 3rd ch from hook and in each across. The ch2 at the beginning counts as a dc - 43 sts.

Rows 2-3: Dc across (43 sts)

Row 4: 21 , 21

Row 5: 20 , 1 , 20

Row 6: 19 , 3 , 19

Row 7: 18 , 5 , 18

Row 8: 17 , 7 , 17

Row 9: 16 , 9 , 16

Row 10: 15 , 11 , 15

Row 11: 14 , 13 , 14

Row 12: 13 , 15 , 13

Row 13: 12 , 17 , 12

Row 14: 11 , 19 , 11

Row 15: 10 , 21 , 10

Row 16: 9 , (1 ,) x5 then 3 , (1 ,) x5 then 9

Rows 17-18: 19 , 3 , 19

Row 19: 19 , 1 , 1 , 19

Rows 20-22: Dc across (43 sts); do not finish off!

Row 23/Rnd 1 - Ch1 and rotate (not turn) to work down the left side of your block. *Make 2sc around the post of each dc down the side (44sc). Rotate to work along row. 2sc in first stitch (first sc is the corner - mark it), sc 20, 2sc in next st, sc 20, 2sc in the last stitch (last sc is the corner - mark it)* Repeat between the * then sl st to your first sc and finish off.

WE DID IT - a YEAR OF FILET CROCHET!

Thank you so much for joining in this year! Be sure to watch my social accounts for details on the upcoming 2021 Filet CAL.

Share your CAL progress with us on IG - #2020filetCAL

2020 BLANKET - DECEMBER PANEL

This pattern is for one panel of a twin-sized bed blanket at approximately 54" by 80" using DK yarn. NOTE: I couldn't get December's panel perfectly centered (oh the horror!) but I don't think it's noticeable as it is off center by only 1 stitch.

...Continued from November-

Place stitch markers as you make Row 198 in stitch 3, 36, 69, 102, 135, 168, 201 and 234

Row 198: Dc across

Row 199: 4 (16 , 16) x7 then 3

Row 200: 3 (15 , 1 , 15) x7 then 4

Row 201: 4 (14 , 3 , 14) x7 then 3

Row 202: 3 (13 , 5 , 13) x7 then 4

Row 203: 4 (12 , 7 , 12) x7 then 3

Row 204: 3 (11 , 9 , 11) x7 then 4

Row 205: 4 (10 , 11 , 10) x7 then 3

Row 206: 3 (9 , 13 , 9) x7 then 4

Row 207: 4 (8 , 15 , 8) x7 then 3

Row 208: 3 (7 , 17 , 7) x7 then 4

Row 209: 4 (6 , 19 , 6) x7 then 3

Row 210: 3 (5 , 21 , 5) x7 then 4

Row 211: 4 (4 , 1 , 1 , 1 , 1 , 1 , 3 , 1 , 1 , 1 , 1 , 1 , 4) x7 then 3

Row 212: 3 (14 , 3 , 14) x7 then 4

Row 213: 4 (14 , 3 , 14) x7 then 3

Row 214: 3 (14 , 1 , 1 , 14) x7 then 4

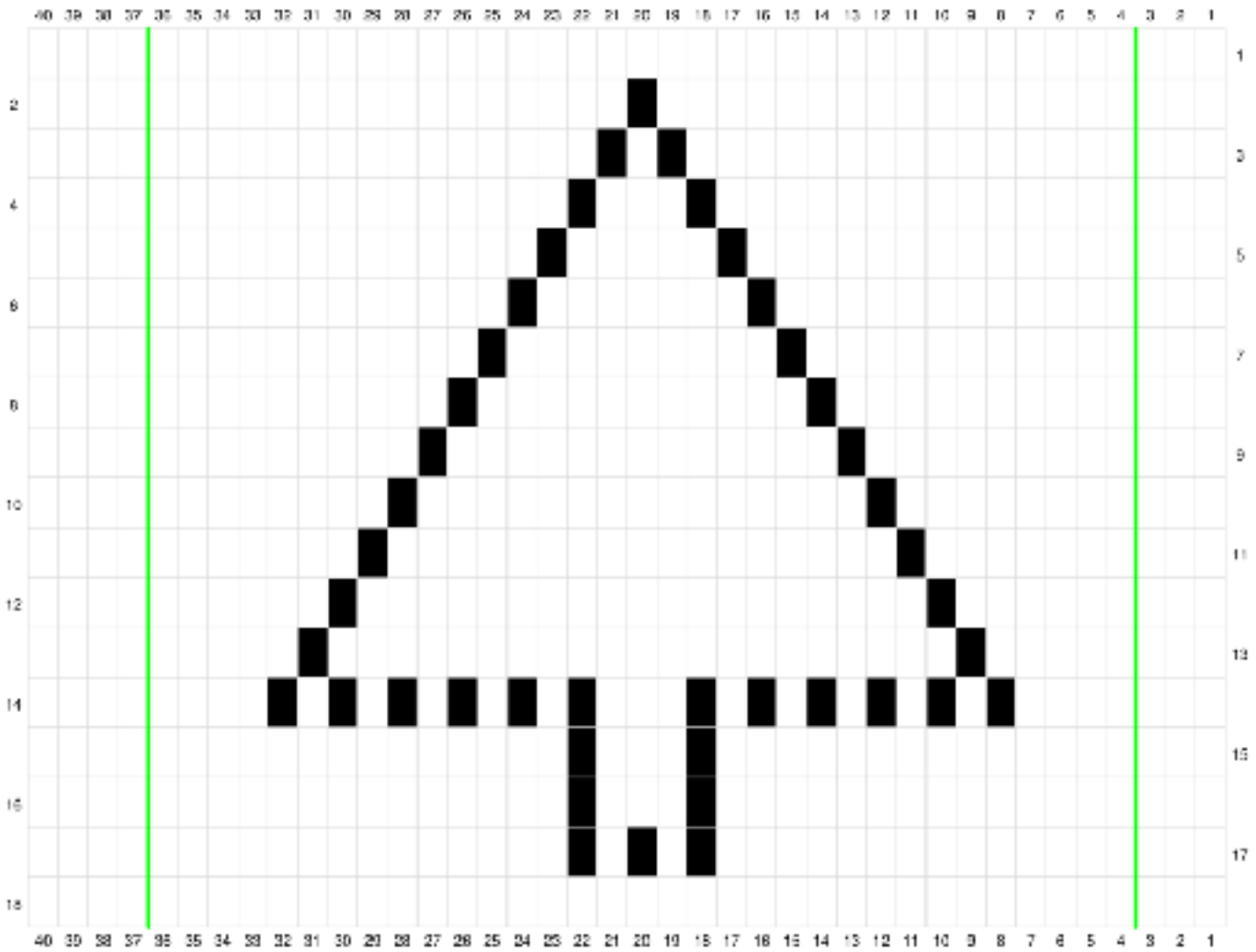
Row 215: Dc across (238 sts). To border, head to page 12 and follow the simple border there (you can do something more fun, but as this blanket is already HUGE simple might be best!

WE DID IT - a YEAR OF FILET CROCHET!

Thank you so much for joining in this year! Be sure to watch my social accounts for details on the upcoming 2021 Filet CAL.

2020 Blanket December Panel Graph

(worked top down)



dc

ch1, sk1

Repeat is between the green lines.

O Tannenbaum BLANKET

- This patterns can be worked with any weight yarn and hook.
- **Yarn amounts** are for aran yarn and a 5.5mm hook. 10% has been added to my personal amounts to reach the given yardage below.
- **This pattern can be increased/decreased** in multiples of 33 stitches across and 18 rows up to make any size blanket.
- **I recommend making a swatch** (one full graph picture of either design, 33 sts x 18 rows) with your desired yarn and hook. Measure to decide how many repeats you need to get the blanket size you want AND to accurately determine your yarn amounts.

Yarn & Supplies -

- 66 yards aran/worsted yarn to make ONE tree** (or tree block)
 - So if you are making a blanket that is 5 trees wide, like the picture, then your yardage per panel would be 330 yards - for 2,640 yards total.
- 5.5mm hook
- 200 yards aran/worsted yarn for the Simple Border
- Stitch markers
- Yarn needle



O Tannenbaum BLOCK

(worked bottom up)

Row 1: FDC 33

Alternately, chain 34 and dc in 3rd ch from hook and in each across. The ch2 at the beginning counts as a dc - 33 sts.

Row 2: 14 , 1 , 1 , 14

Rows 3-4: 14 , 3 , 14

Row 5: 4 , (1 ,) x5 then 3 , (1 ,) x5 then 4

Row 6: 5 , 21 , 5

Row 7: 6 , 19 , 6

Row 8: 7 , 17 , 7

Row 9: 8 , 15 , 8

Row 10: 9 , 13 , 9

Row 11: 10 , 11 , 10

Row 12: 11 , 9 , 11

Row 13: 12 , 7 , 12

Row 14: 13 , 5 , 13

Row 15: 14 , 3 , 14

Row 16: 15 , 1 , 15

Row 17: 16 , 16

Row 18: dc across (33 sts) —> Making blocks? Don't cut your yarn! Go to page 11.

panel

FDC a multiple of 33 (or chain a multiple of 33 + 1).

Place stitch markers during row one every 43 sts.

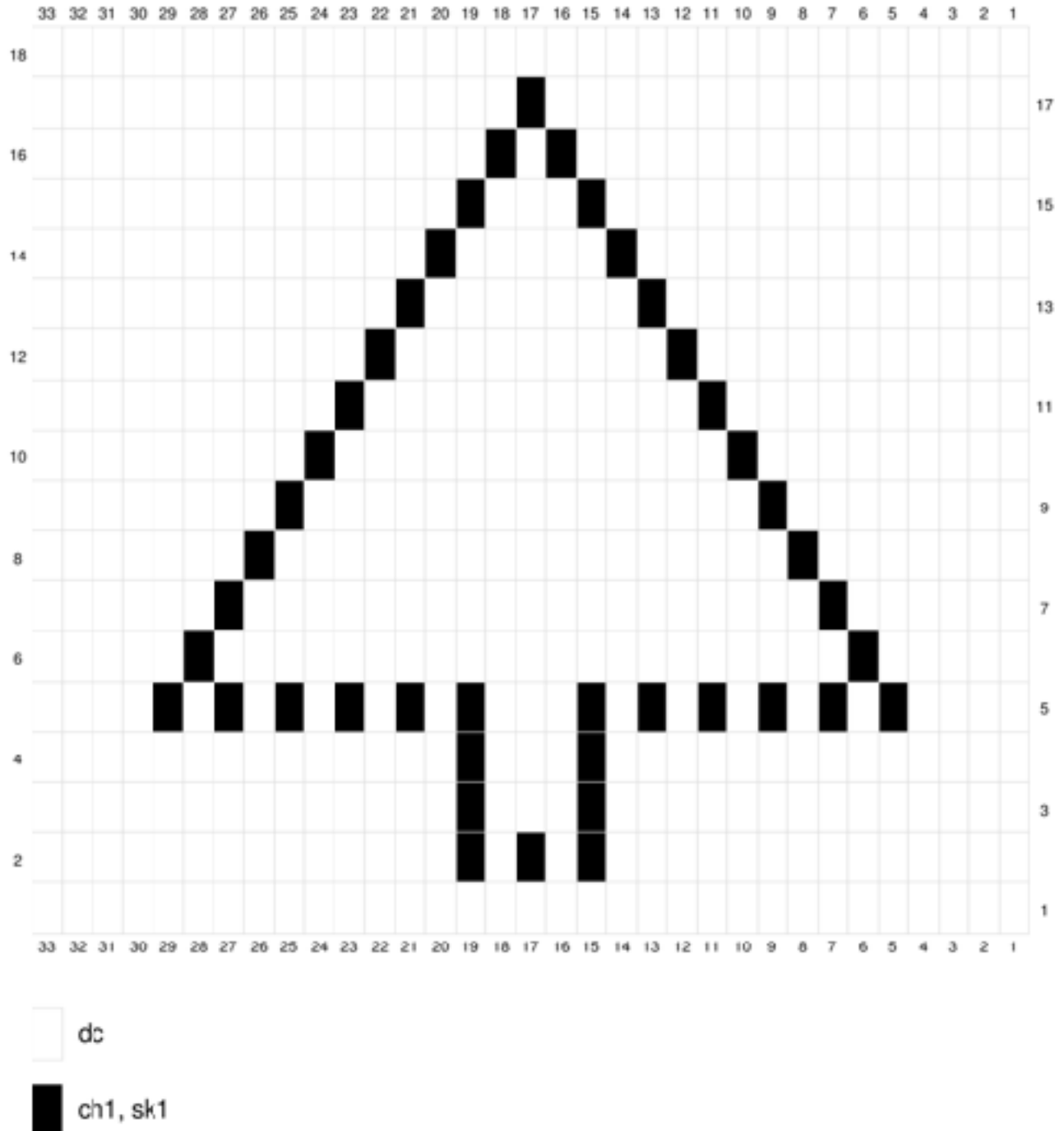
Follow the block pattern to the left, and when you come to a marker, you should have just reached the end of the row pattern. Move your marker into the stitch you just finished. Now just repeat the row over again. Repeat for as many multiples of 33 as you chose.

Repeat Rows 1-18 until you blanket is at large as you want. **When you repeat Row 1 you will dc across for that row.**

Color Blocked Panels: see page 3 for how to do this.

O Tannenbaum Blanket Graph

(worked bottom up)



SIMPLE BLANKET BORDER

Joinable Blocks - follow round one of the blanket border below and then join however you like.

Paneled Blanket

Rnd 1: Ch1 and start by going down the left side of your work first. Make 2sc around each dc post (or row) down the side. Next you'll do 2sc into the first stitch along the bottom of the work (mark the first st of this increase - this is a corner). Now sc in each stitch across to the last chain/FDC where you'll do another 2sc (mark the second st of this increase - this is a corner). Continue in this manner around your work, making sure to make the increases for the corners. You'll end with 2sc in the last stitch, the second of which is your final corner. Join with a slst to your first sc.

You can add any border you like from here, OR follow the quick & simple one below-

Rnd 2: Ch 3 (counts as a dc in the border), dc next st and in each st around, doing (2dc, ch1, 2dc) into each corner sc. Sl st to top of starting ch3.

Rnd 3: Ch 3, turn (counts as a stitch), dc next st and in each st around, doing (2dc, ch1, 2dc) into each corner sc. Sl st to top of starting ch3.

Rnd 2: Ch 3, turn (counts as a stitch), dc next st and in each st around, doing (2dc, ch1, 2dc) into each corner sc. Sl st to top of starting ch3.



Share your CAL progress with us on IG

with

#otannenbaumblanket

Don't forget to share in our [FB Group](#) too!



WE DID IT - a YEAR OF FILET CROCHET!

Thank you so much for joining in this year! Be sure to watch my social accounts for details on the upcoming 2021 Filet CAL.