

#2020FILETCAL - JUNE - BUTTERFLY GARDEN

Designed by Becca Bomgardner



Every effort has been made to create patterns free of errors. However, I am a human mother of six (ages 12-2). While I WISH crocheting was my full time job, I'm not in that stage of life yet. That said, if you DO find an error please let me know. Help is available from myself and the other hostesses on both IG and in the FB Group if you get stuck.

Please respect my creative rights! You are welcome to sell finished physical crochet items you make from my patterns online or locally. You MAY NOT create for sale or free any patterns which use my designs in any way (in whole or parts). This pattern cannot be resold, rewritten or shared in any way, in whole or in parts, including YouTube tutorials. Thank you!

Yarn & Supplies

(to save ink and paper each month, I'll refer you to the CAL Intro file for more info on yarn amounts for each CAL option)

Terms & Stitches - US Terms

st(s) - stitch(es)

ch - chain

sk - skip

dc - double crochet

sc - single crochet

sl st - slip stitch

rep - repeat

Special Stitch - Foundation Row Crochet

FDC - Foundation Double Crochet

Ch3, yo and insert hook into third chain from hook, pull up a loop (3 loops on hook). *Yo and pull through 1 loop (this creates the base stitch (chain) for the next fdc), you should still have 3 loops on your hook. Now complete a dc stitch (yo and pull through 2 loops, yo and pull through 2 loops again to complete the dc stitch). To start the next stitch, yo and insert hook into the 'v' of the base stitch, yo and pull up a loop (chain created), now complete a dc stitch as before. Continue this sequence for the number of stitches in your desired width.

THE CHAIN 2 at the beginning of your Foundation Row COUNTS as a DC.

Good video tutorial of FDC by Gleeful Things: <https://www.youtube.com/watch?v=5t691HnQpBM>

Numerical Filet - "How To" Guide

(to save ink and paper each month, I'll refer you to the CAL Intro file where you can find this handy sheet)

NOTE: All 2020 CAL patterns are worked from the TOP of the design down. For the full year blanket design, I wanted January to be at the top. To save me work in pattern writing, all 3 versions work from the top down - which is different than usual filet patterns. This doesn't matter in the over all look of the finished project. But I wanted you to be aware of this difference, because while you work the pictures will be upside down to you. :-)

BUTTERFLY GARDEN BLOCK

Row 1: FDC 43

Alternately, chain 44 and dc in 3rd ch from hook and in each across. The ch2 at the beginning counts as a dc - 43 sts.

Row 2-3: Dc across

Row 4: 19 , 3 , 19

Row 5: 10 , 1 , 1 , 5 , 1 , 5 , 1 , 1 , 10

Row 6: 8 , 7 , 4 , 4 , 7 , 8

Row 7: 7 , 9 , 2 , 1 , 2 , 9 , 7

Row 8: 7 , 10 , 1 , 1 , 1 , 10 , 7

Row 9: 7 , 12 , 1 , 12 , 7

Row 10: 8 , 11 , 1 , 11 , 8

Row 11: 9 , 10 , 1 , 10 , 9

Row 12: 10 , 9 , 1 , 9 , 10

Row 13: 11 , 8 , 1 , 8 , 11

Row 14: 10 , 7 , 1 , 1 , 1 , 7 , 10

Row 15: 9 , 6 , 3 , 1 , 3 , 6 , 9

Row 16: 8 , 5 , 6 , 6 , 5 , 8

Row 17: 8 , 3 , 17 , 3 , 8

Row 18: 8 , 1 , 21 , 1 , 8

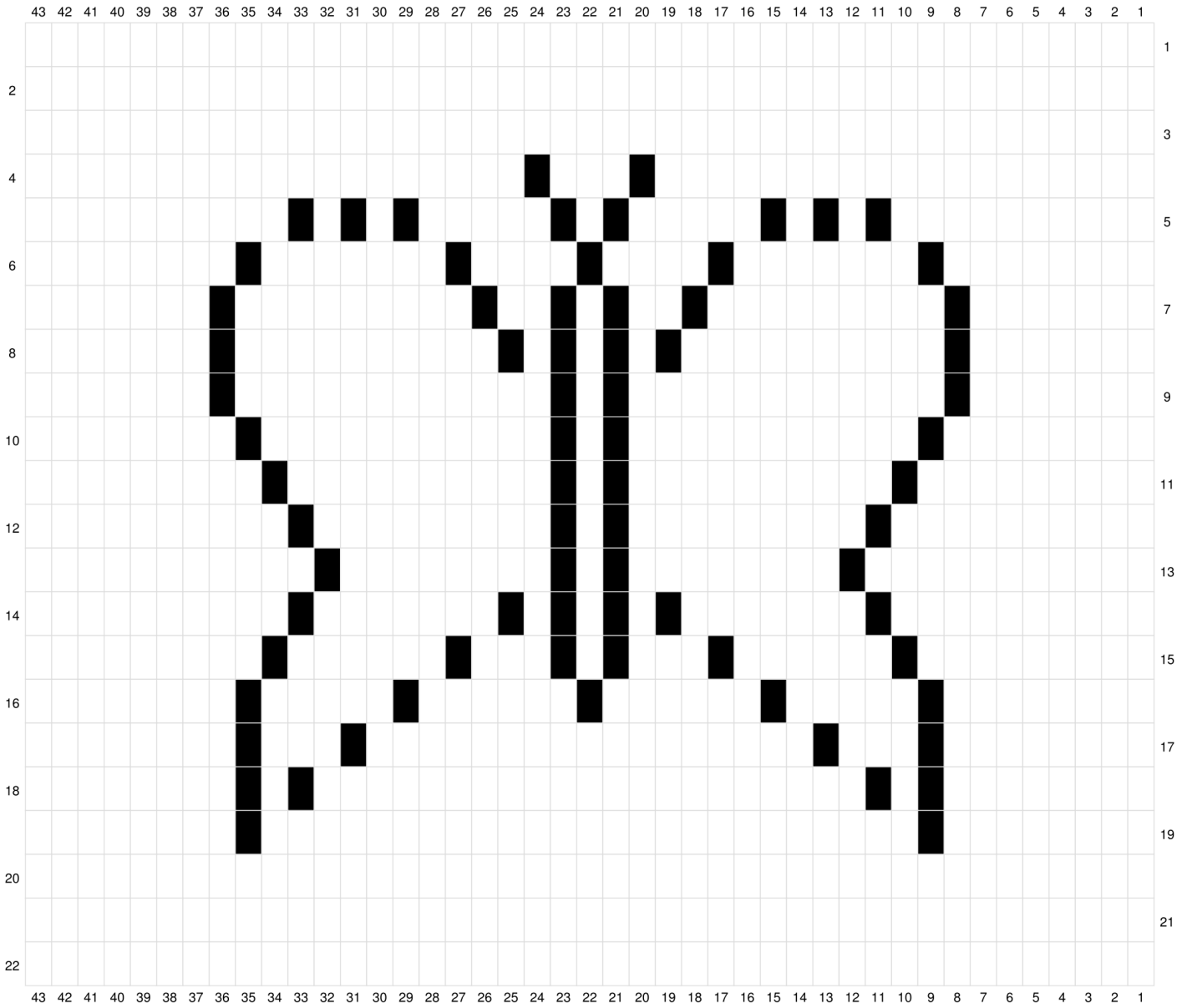
Row 19: 8 , 25 , 8

Rows 20-22: Dc across (43 sts); do not finish off!

Row 23/Rnd 1 - Ch1 and rotate (not turn) to work down the left side of your block. *Make 2sc around the post of each dc down the side (44sc). Rotate to work along row. 2sc in first stitch (first sc is the corner - mark it), sc 20, 2sc in next st, sc 20, 2sc in the last stitch (last sc is the corner - mark it)* Repeat between the * then sl st to your first sc and finish off.

Share your CAL progress with us on IG - #2020filetCAL

Butterfly Garden Block Graph



- dc
- ch1, sk1

2020 BLANKET - JUNE PANEL

This pattern is for one panel of a twin-sized bed blanket at approximately 54" by 80" using DK yarn. You will add the rows for each new design every month for a total of 12 different of designs and 214 rows. In December border instructions will be included to finish your blanket.

...Continued from May...

Place stitch markers as you make Row 90 in stitch 2, 41, 80, 119, 158, 197, and 236

Row 90: Dc across

Row 91: 2 (17 , 3 , 17) x6 then 2

Row 92: 2 (8 , 1 , 1 , 5 , 1 , 5 , 1 , 1 , 8) x6 then 2

Row 93: 2 (6 , 7 , 4 , 4 , 7 , 6) x6 then 2

Row 94: 2 (5 , 9 , 2 , 1 , 2 , 9 , 5) x6 then 2

Row 95: 2 (5 , 10 , 1 , 1 , 1 , 10 , 5) x6 then 2

Row 96: 2 (5 , 12 , 1 , 12 , 5) x6 then 2

Row 97: 2 (6 , 11 , 1 , 11 , 6) x6 then 2

Row 98: 2 (7 , 10 , 1 , 10 , 7) x6 then 2

Row 99: 2 (8 , 9 , 1 , 9 , 8) x6 then 2

Row 100: 2 (9 , 8 , 1 , 8 , 9) x6 then 2

Row 101: 2 (8 , 7 , 1 , 1 , 1 , 7 , 8) x6 then 2

Row 102: 2 (7 , 6 , 3 , 1 , 3 , 6 , 7) x6 then 2

Row 103: 2 (6 , 5 , 6 , 6 , 5 , 6) x6 then 2

Row 104: 2 (6 , 3 , 17 , 3 , 6) x6 then 2

Row 105: 2 (6 , 1 , 21 , 1 , 6) x6 then 2

Row 106: 2 (6 , 25 , 6) x6 then 2

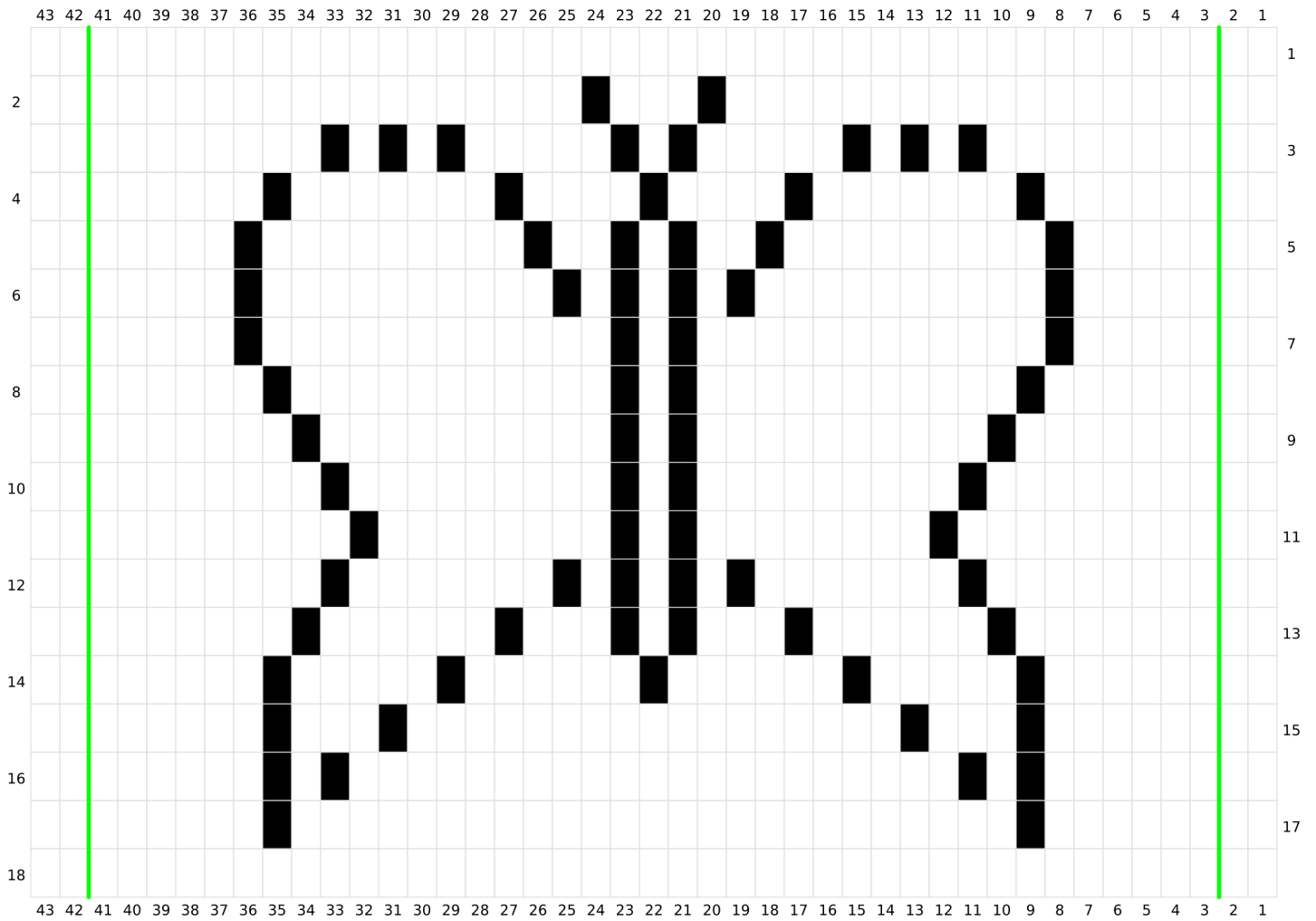
Row 107: Dc across (238 sts). If you're doing one color, put a marker in your blanket so it doesn't unravel. If you plan to change colors, finish off this color now.

YAY! We're half done!

Share your CAL progress with us on IG - #2020filetCAL



2020 Blanket June Panel Graph



- dc
- ch1, sk1
- repeat is between green lines

BUTTERFLY GARDEN BLANKET

- This pattern can be increased or decreased in multiples of 37 sts across and 18 rows.
- Using DK yarn and the specified repeats below, you'll create a baby size blanket approximately 26 by 33 inches, depending on your tension.
- Yarn Needed - 156 yards DK per panel
- **I recommend making a swatch** (one full butterfly, 37 sts x 18 rows) with your desired yarn and hook and then measure and decide how many repeats you need to get the blanket size you want and to accurately determine your yarn amounts.
- **Butterfly Blocks** - 60 yards DK per block. Block size is about 8x7 inches after sc border. FDC 37; follow pattern but make no repeats. Alternately, chain 38 and dc in 3rd ch from hook and in each across. The ch2 at the beginning counts as a dc - 37 sts.

Place stitch markers during each Row 1 in stitches 37 and 74

Row 1: FDC 111; for repeats just dc across for 111 sts.

Alternately, chain 112 and dc in 3rd ch from hook and in each across. The ch2 at the beginning counts as a dc - 111 sts.

Row 2: (5 , 25 , 5) x3

Row 3: (5 , 1 , 21 , 1 , 5) x3

Row 4: (5 , 3 , 17 , 3 , 5) x3

Row 5: (5 , 5 , 6 , 6 , 5 , 5) x3

Row 6: (6 , 6 , 3 , 1 , 3 , 6 , 6) x3

Row 7: (7 , 7 , 1 , 1 , 1 , 7 , 7) x3

Row 8: (8 , 8 , 1 , 8 , 8) x3

Row 9: (7 , 9 , 1 , 9 , 7) x3

Row 10: (6 , 10 , 1 , 10 , 6) x3

Row 11: (5 , 11 , 1 , 11 , 5) x3

Row 12: (4 , 12 , 1 , 12 , 4) x3

Row 13: (4 , 10 , 1 , 1 , 1 , 10 , 4) x3

Row 14: (4 , 9 , 2 , 1 , 2 , 9 , 4) x3



Row 15: (5 , 7 , 4 , 4 , 7 , 5) x3

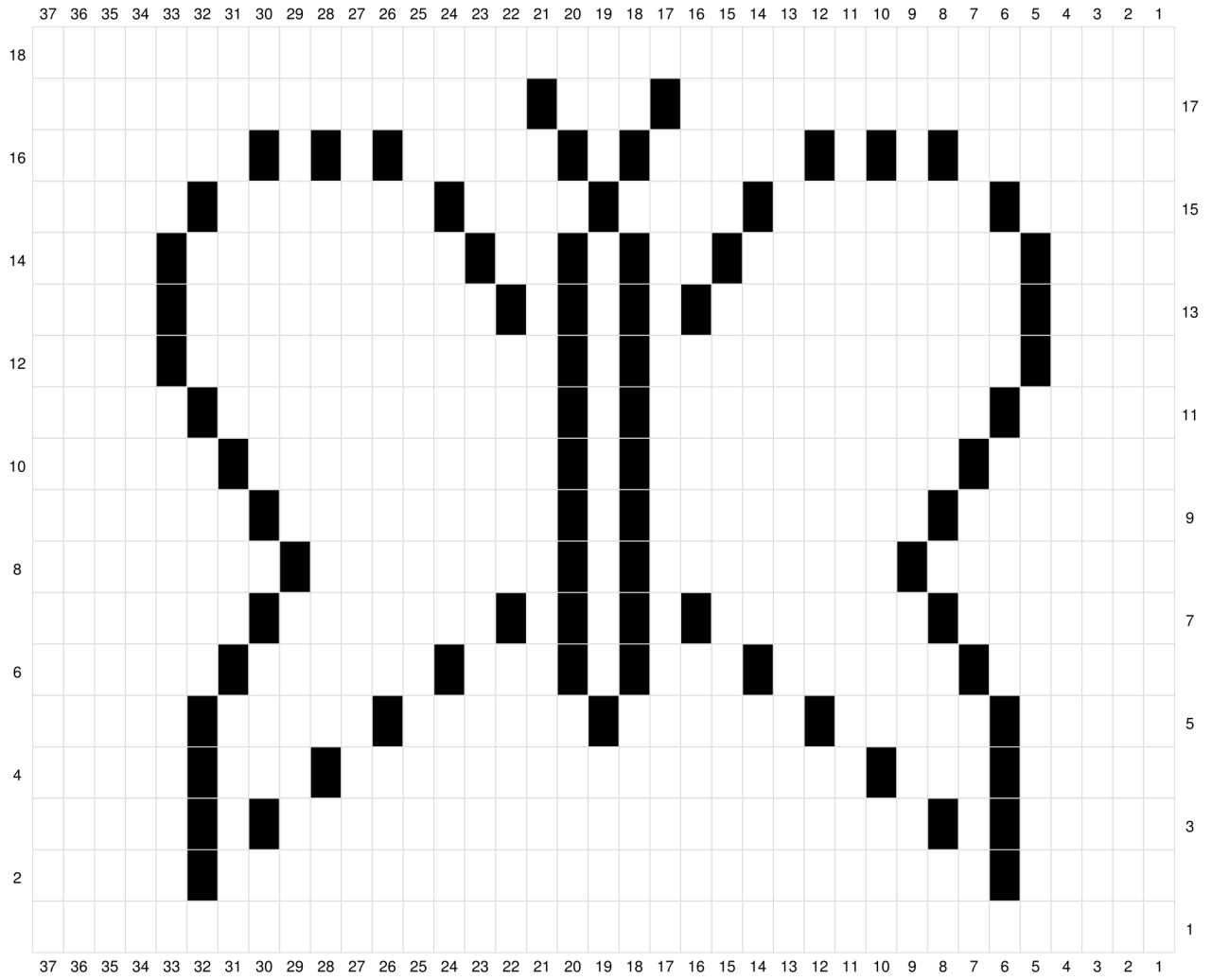
Row 16: (7 , 1 , 1 , 5 , 1 , 5 , 1 , 1 , 7) x3

Row 17: (16 , 3 , 16) x3

Row 18: Dc across (111 sts) - if making joinable blocks do not cut yarn, go to page 10!

Paneled blanket - Repeat Rows 1-18 more 4 times (5 panels of butterflies)

Butterfly Garden Blanket Graph



- dc
- ch1, sk1

BLANKET BORDER

Rnd 1 in colors to match panels OR chosen border color: Ch1 and start by going down the side of your blanket by making 2sc around each dc post (or row) down the side. Then you'll do 2sc into the first stitch along the bottom of the blanket (into your FDC or chain), and then sc in each stitch across to the last chain/FDC where you'll do another 2sc (these increases at the ends make the corners). Continue in this manner around your blanket. Join with a slst to your first sc.

From here, you can get creative with your border (you can literally do anything, there are great border books out there and lots of free ideas too) or go with the super simple dc one below-

Rnd 2: Dc around, doing (2dc, ch1, 2dc) in corner sc.

Rnd 3: Ch 1 and Crab Stitch in each stitch around, no increases for corners. **OR** sc around, doing 3sc in corner spaces. Sl st to starting st and finish off. Weave in all your ends.

BLOCK BORDER

Flower Blocks: Ch1 and start by going down the side of your block by making 2sc around each dc post (or row) down the side. Then you'll do 2sc into the first stitch along the bottom of the block (into your FDC or chain), and then sc in each stitch across to the last chain/FDC where you'll do another 2sc (these increases at the ends make the corners). Continue in this manner around your block. Join with a sl st to your first sc.

Join your blocks with your favorite method.



Share your CAL progress with us on IG with #2020filetCAL

Don't forget to share in our [FB Group](#) too!

