

#2020FILETCAL - May - May FLOWERS

Designed by Becca Bomgardner
Dutch Translation by Inge van Dam



May

Every effort has been made to create patterns free of errors. However, I am a human mother of six (ages 12-2). While I WISH crocheting was my full time job, I'm not in that stage of life yet. That said, if you DO find an error please let me know. Help is available from myself and the other hostesses on both IG and in the FB Group if you get stuck.

Yarn & Supplies

(to save ink and paper each month, I'll refer you to the CAL Intro file for more info on yarn amounts for each CAL option)

Terms & Stitches - US Terms

st(s) - stitch(es)

ch - chain

sk - skip

dc - double crochet

sc - single crochet

sl st - slip stitch

rep - repeat

Special Stitches

FDC - Foundation Double Crochet

Tutorial by Gleeful Things: <https://www.youtube.com/watch?v=SyjAiEhFFYQ>

Numerical Filet - "How To" Guide

(to save ink and paper each month, I'll refer you to the CAL Intro file where you can find this handy sheet)

NOTE: All 2020 CAL patterns are worked from the TOP of the design down. For the full year blanket design, I wanted January to be at the top. To save me work in pattern writing, all 3 versions work from the top down - which is different than usual filet patterns. This doesn't matter in the over all look of the finished project. But I wanted you to be aware of this difference, because while you work the pictures will be upside down to you. :-)

MAY FLOWERS BLOCK

Note: Because the flower needs a horizontal center, it is **not** centered top to bottom in the block. This will also happen in July. I promise it's not noticeable enough to be bothersome in the finished blanket.

Row 1: FDC 43

Alternately, chain 44 and dc in 2nd ch from hook and in each across - 43 dc.

Rows 2-5: Dc across (43 sts)

Row 6: 19 , 1 , 1 , 19

Row 7: 18 , 5 , 18

Row 8: 13 , 1 , 1 , 7 , 1 , 1 , 13

Row 9: 12 , 5 , 5 , 5 , 12

Row 10: 11 , 7 , 3 , 7 , 11

Row 11: 12 , 7 , 1 , 7 , 12

Row 12: 13 , 1 , 1 , 1 , 3 , 1 , 1 , 1 , 13

Row 13: 12 , 7 , 1 , 7 , 12

Row 14: 11 , 7 , 3 , 7 , 11

Row 15: 12 , 5 , 5 , 5 , 12

Row 16: 13 , 1 , 1 , 7 , 1 , 1 , 13

Row 17: 18 , 5 , 18

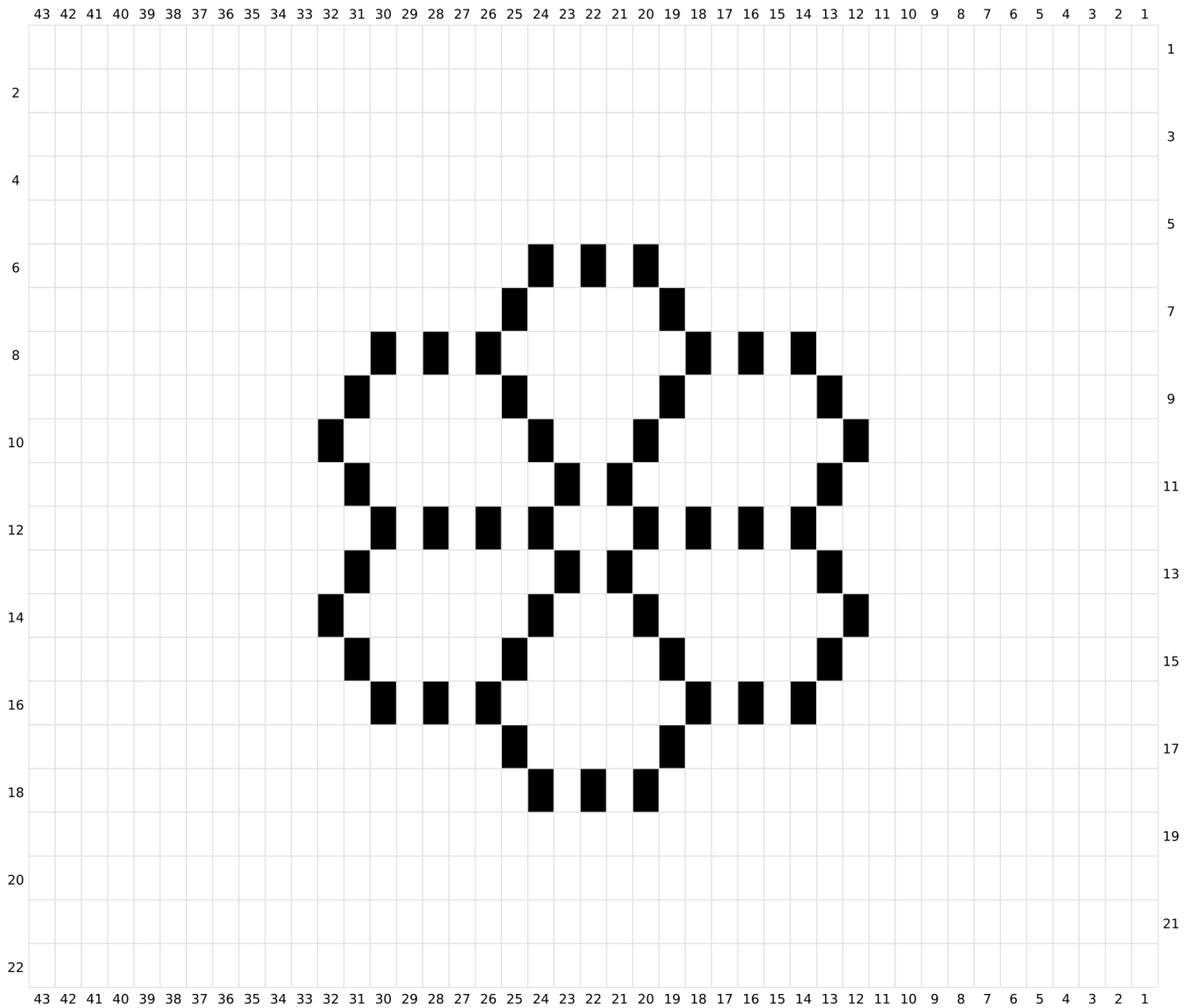
Row 18: 19 , 1 , 1 , 19

Row 19-22: Dc across (43 sts)

Row 23/Rnd 1 - Ch1 and rotate (not turn) to work down the left side of your block. *Make 2sc around the post of each dc down the side (44sc). Rotate to work along row. 2sc in first stitch (first sc is the corner - mark it), sc 20, 2sc in next st, sc 20, 2sc in the last stitch (last sc is the corner - mark it)* Repeat between the * then sl st to your first sc and finish off.

Share your CAL progress with us on IG - #2020filetCAL

May Flowers Block Graph



dc

ch1, sk1

2020 BLANKET - May Panel

This pattern is for one panel of a twin-sized bed blanket at approximately 54" by 80" using DK yarn. You will add the rows for each new design every month for a total of 12 different of designs and 214 rows. In December border instructions will be included to finish your blanket.

...Continued from April...

Place stitch markers as you make Row 73 in stitches 3, 32, 61, 90, 119, 148, 177, 206, and 235

Row 73-74: Dc across

Row 75: 3 (12 , 1 , 1 , 12) x8 then 3

Row 76: 3 (11 , 5 , 11) x8 then 3

Row 77: 3 (6 , 1 , 1 , 7 , 1 , 1 , 6) x8 then 3

Row 78: 3 (5 , 5 , 5 , 5 , 5) x8 then 3

Row 79: 3 (4 , 7 , 3 , 7 , 4) x8 then 3

Row 80: 3 (5 , 7 , 1 , 7 , 5) x8 then 3

Row 81: 3 (6 , 1 , 1 , 1 , 3 , 1 , 1 , 1 , 6) x8 then 3

Row 82: 3 (5 , 7 , 1 , 7 , 5) x8 then 3

Row 83: 3 (4 , 7 , 3 , 7 , 4) x8 then 3

Row 84: 3 (5 , 5 , 5 , 5 , 5) x8 then 3

Row 85: 3 (6 , 1 , 1 , 7 , 1 , 1 , 6) x8 then 3

Row 86: 3 (11 , 5 , 11) x8 then 3

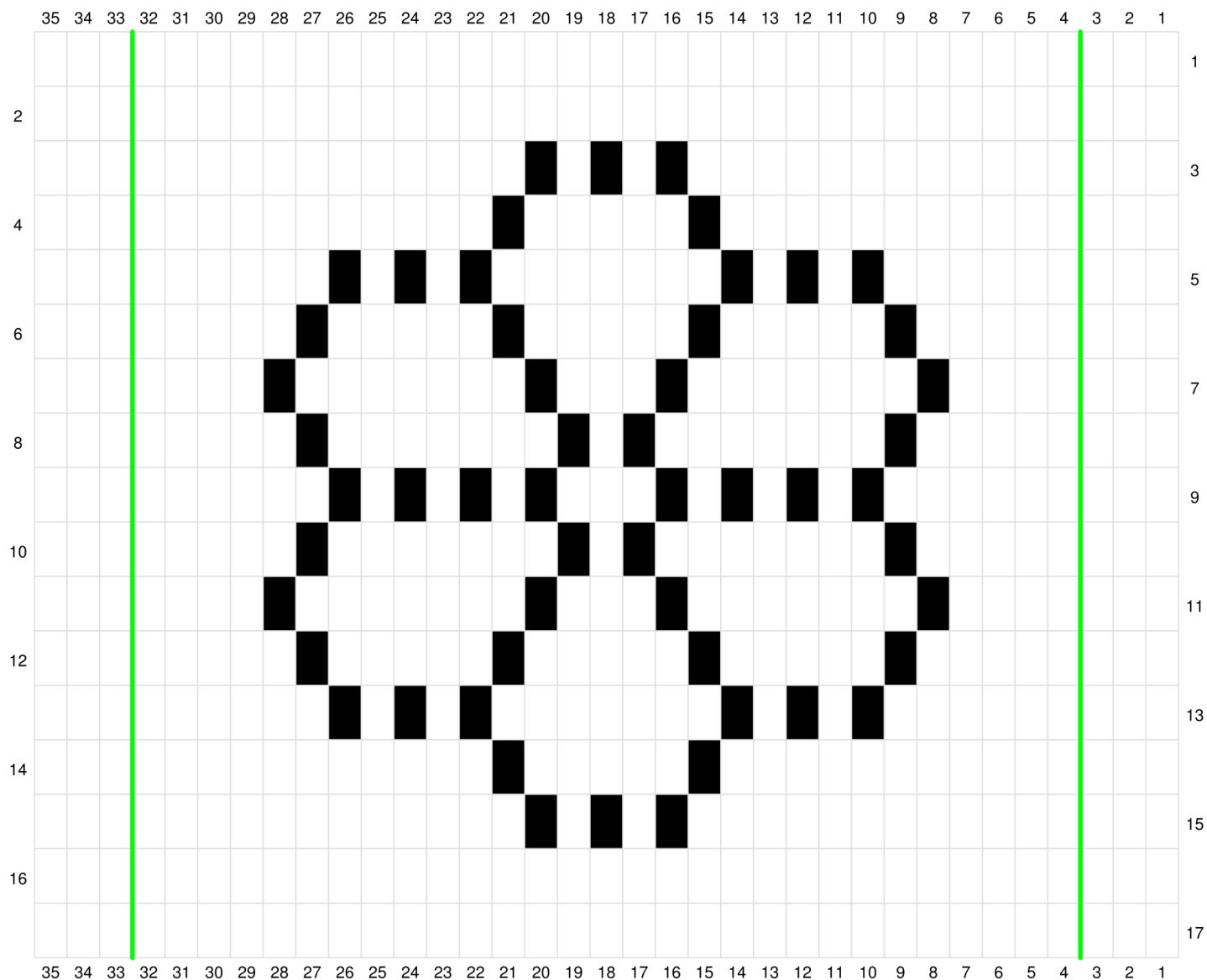
Row 87: 3 (12 , 1 , 1 , 12) x8 then 3

Row 88-89: Dc across (238 sts). If you're doing one color, put a marker in your blanket so it doesn't unravel. If you plan to change colors, finish off this color now.



Share your CAL progress with us on IG - #2020filetCAL

2020 Blanket May Panel Graph



dc



ch1, sk1



repeat is between green lines

MAY FLOWERS BLANKET

This pattern can be increased or decreased in multiples of 29 sts across and 15 rows.

- **Paneled Blanket** - 210 yards DK per panel. Using DK yarn and the specified repeats below, you'll create a blanket approximately 32 by 44 inches, depending on your tension.
- **Flower Blocks** - 42 yards DK per block. Block size is about 6 inches square after sc border. FDC 29; follow pattern but make no repeats. Alternately, chain 30 and dc in 3rd ch from hook and in each across. The ch2 at the beginning counts as a dc - 29 sts.

Place stitch markers during each Row 1 in stitches: 29, 58, 87, and 116

Row 1: FDC 145; in repeats just dc across for 145 sts.

Alternately, chain 146 and dc in 3rd ch from hook and in each across. The ch2 at the beginning counts as a dc - 145 sts.

Row 2: (12 , 1 , 1 , 12) x5

Row 3: (11 , 5 , 11) x5

Row 4: (6 , 1 , 1 , 7 , 1 , 1 , 6) x5

Row 5: (5 , 5 , 5 , 5 , 5) x5

Row 6: (4 , 7 , 3 , 7 , 4) x5

Row 7: (5 , 7 , 1 , 7 , 5) x5

Row 8: (6 , 1 , 1 , 1 , 3 , 1 , 1 , 1 , 6) x5

Row 9: (5 , 7 , 1 , 7 , 5) x5

Row 10: (4 , 7 , 3 , 7 , 4) x5

Row 11: (5 , 5 , 5 , 5 , 5) x5

Row 12: (6 , 1 , 1 , 7 , 1 , 1 , 6) x5

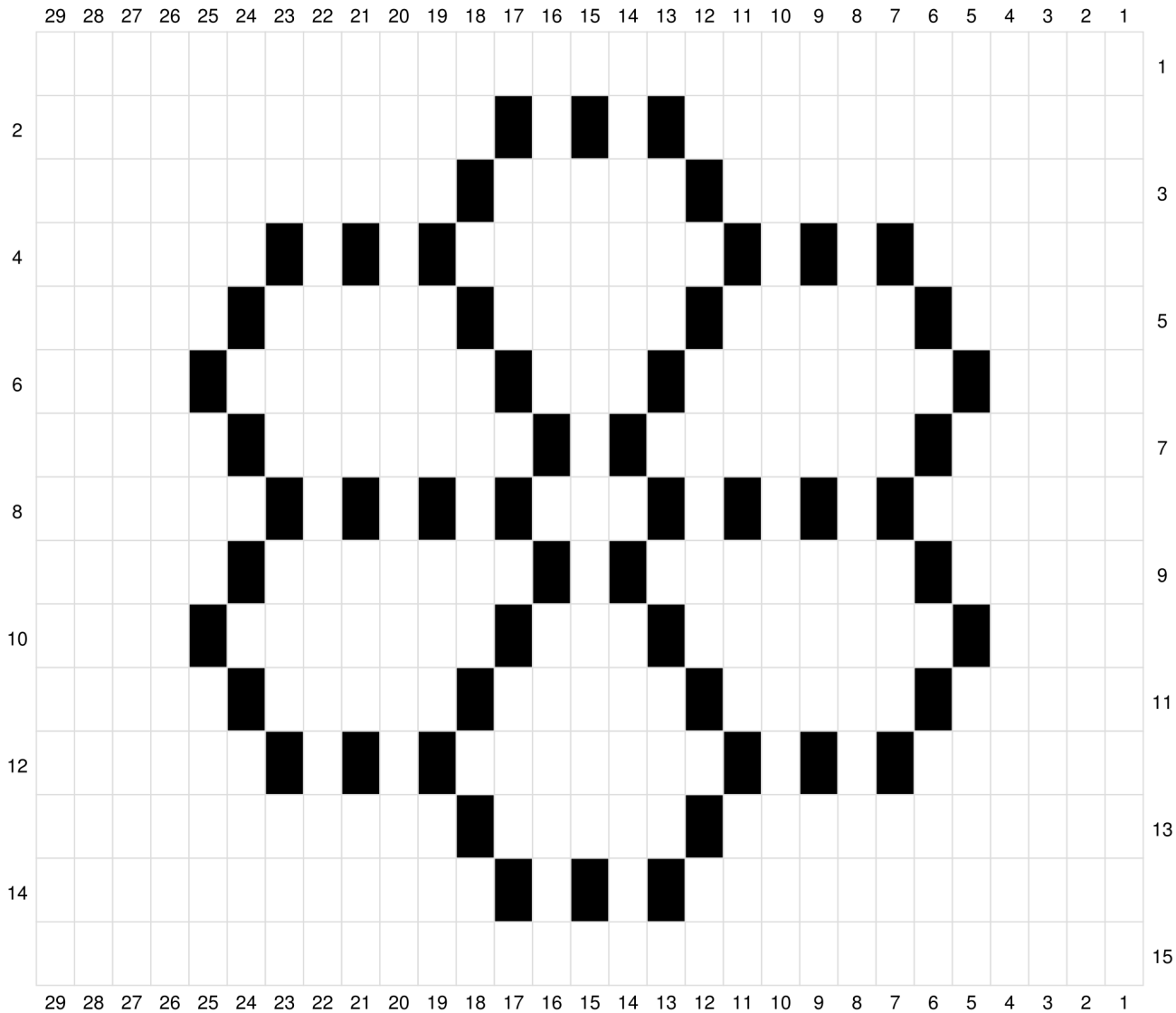
Row 13: (11 , 5 , 11) x5

Row 14: (12 , 1 , 1 , 12) x5

Row 15: Dc across (145 sts) - **if making joinable blocks do not cut yarn - go to the border!**

Repeat Rows 1-15 more six times (7 panels of flowers).

May Flowers Blanket/Block Graph



dc



ch1, sk1

BLANKET BORDER

Rnd 1: Ch1 and start by going down the side of your blanket by making 2sc around each dc post (or row) down the side. Then you'll do 2sc into the first stitch along the bottom of the blanket (into your FDC or chain), and then sc in each stitch across to the last chain/FDC where you'll do another 2sc (these increases at the ends make the corners). Continue in this manner around your blanket. Join with a slst to your first sc.

From here, you can get creative with your border (you can literally do anything, there are great border books out there and lots of free ideas too) or go with the super simple dc one below-

Rnd 2: Dc around, doing (2dc, ch1, 2dc) in corner sc.

Rnd 3: Ch 1 and Crab Stitch in each stitch around, no increases for corners. **OR** sc around, doing 3sc in corner spaces. Sl st to starting st and finish off. Weave in all your ends.

BLOCK BORDER

Flower Blocks: Ch1 and start by going down the side of your block by making 2sc around each dc post (or row) down the side. Then you'll do 2sc into the first stitch along the bottom of the block (into your FDC or chain), and then sc in each stitch across to the last chain/FDC where you'll do another 2sc (these increases at the ends make the corners). Continue in this manner around your block. Join with a sl st to your first sc.

Join your blocks with your favorite method.



Share your CAL progress with us on IG with #2020filetCAL or #mayflowersblanket

Don't forget to share in our FB Group too!

