

# #2020FILETCAL - March - ST. PATRICK

Designed by Becca Bomgardner



Please respect my creative rights! **You are welcome to sell finished physical crochet items** you make from my patterns online or locally. **You MAY NOT create for sale or free any patterns which use my designs in any way (in whole or parts).** This pattern cannot be resold, rewritten or shared in any way, in whole or in parts, including YouTube tutorials. Thank you!

2020 Filet CAL~ March ~ St. Patrick ~ © 2020 Becca Bomgardner of Mayhem & Majesty

## **Yarn & Supplies**

(to save ink and paper each month, I'll refer you to the CAL Intro file for more info on yarn amounts for each CAL option)

## **Terms & Stitches - US Terms**

st(s) - stitch(es)

ch - chain

sk - skip

dc - double crochet

sc - single crochet

sl st - slip stitch

rep - repeat

## **Special Stitches**

### **FDC - Foundation Double Crochet**

A good tutorial by Gleeful Things: <https://www.youtube.com/watch?v=5t691HnQpBM>

### **Crab Stitch (Reverse Single Crochet)**

Tutorial by BellaCoco - <https://www.youtube.com/watch?v=K7XOkuelkNM>

## **Numerical Filet - "How To" Guide**

(to save ink and paper each month, I'll refer you to the CAL Intro file (this is included in your email too each month in case you loose it) where you can find this handy sheet)

**NOTE:** All 2020 CAL patterns are worked from the TOP of the design down. For the full year blanket design, I wanted January to be at the top. To save me work in pattern writing, all 3 versions work from the top down - which is different than usual filet patterns. This doesn't matter in the over all look of the finished project. But I wanted you to be aware of this difference, because while you work the pictures will be upside down to you. :-)

# ST. PATRICK BLOCK

No repeats ( ) are used for the block design, as you're only making one shamrock.

**Row 1:** FDC 43

Alternately, chain 44 and dc in 3rd ch from hook and in each across. The ch2 at the beginning counts as a dc - 43 sts.

**Rows 2-3:** Dc across (43 sts)

**Row 4:** 19 , 1 , 1 , 19

**Row 5:** 17 , 7 , 17

**Rows 6-9:** 15 , 11 , 15

**Row 10:** 17 , 7 , 17

**Row 11:** 12 , 1 , 1 , 9 , 1 , 1 , 12

**Row 12:** 10 , 21 , 10

**Rows 13-15:** 8 , 25 , 8

**Row 16:** 8 , 11 , 1 , 11 , 8

**Row 17:** 10 , 7 , 2 , 2 , 7 , 10

**Row 18:** 12 , 1 , 1 , 4 , 4 , 1 , 1 , 12

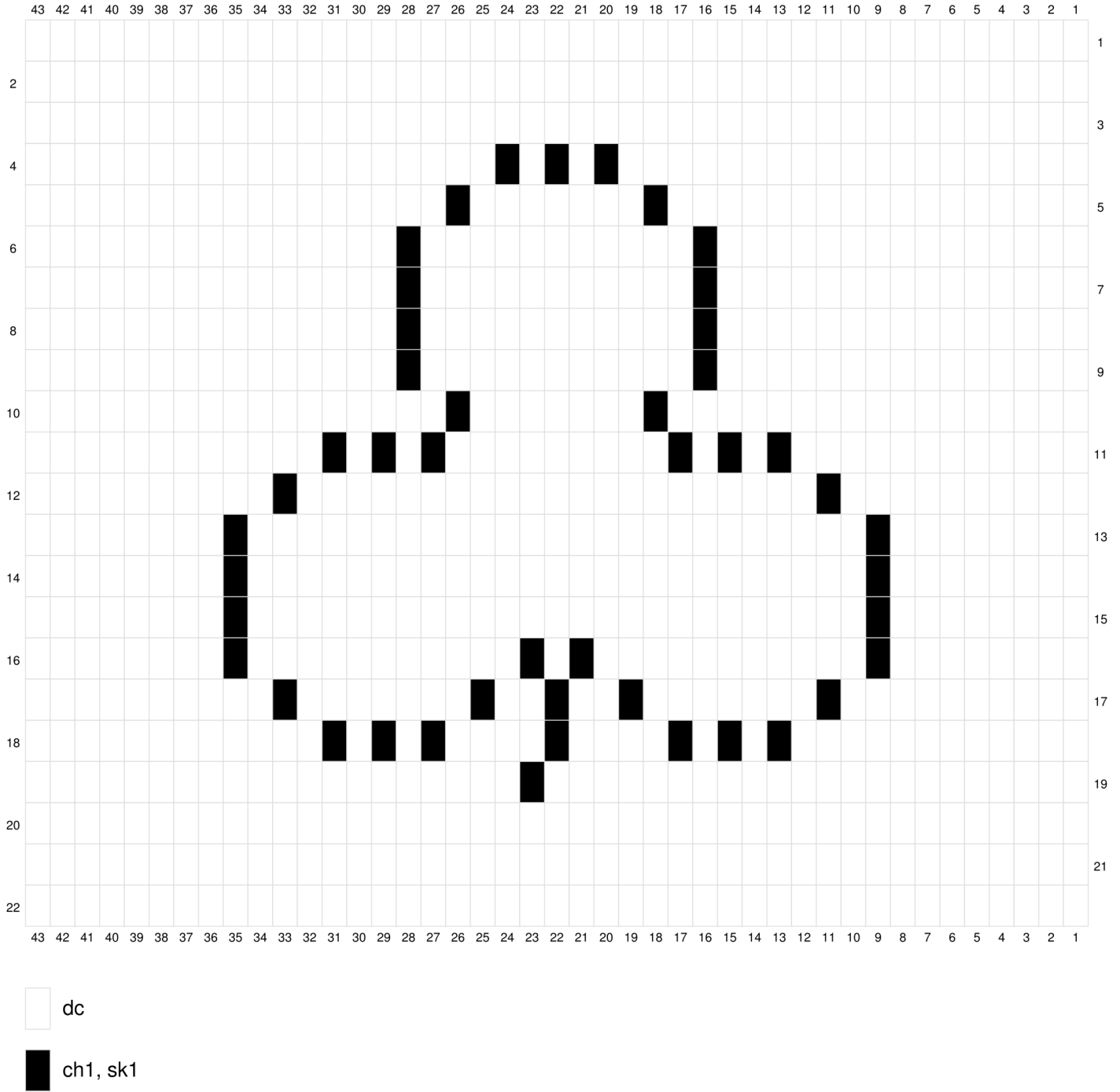
**Row 19:** 22 , 20

**Rows 20-22:** Dc across (43 sts); do not finish off!

**Row 23/Rnd 1 - Ch1 and rotate (not turn) to work down the left side of your block.** \*Make 2sc around the post of each dc down the side (44sc). Rotate to work along row. 2sc in first stitch (first sc is the corner - mark it), sc 20, 2sc in next st, sc 20, 2sc in the last stitch (last sc is the corner - mark it)\* Repeat between the \* then sl st to your first sc and finish off.

**Share your CAL progress with us on IG - #2020filetCAL**

### St. Patrick Block Graph





# 2020 BLANKET

## - MARCH PANEL -

Continuing on after February's panel...

**Row 37:** 238

Place stitch markers as you make Row 37 in stitch 2, 41, 80, 119, 158, 197, and 236.

**Row 38:** 2 ( 17 , 1 , 1 , 17 ) x6 then 2

**Row 39:** 2 ( 15 , 7 , 15 ) x6 then 2

**Rows 40-43:** 2 ( 13 , 11 , 13 ) x6 then 2

**Row 44:** 2 ( 15 , 7 , 15 ) x6 then 2

**Row 45:** 2 ( 10 , 1 , 1 , 9 , 1 , 1 , 10 ) x6 then 2

**Row 46:** 2 ( 8 , 21 , 8 ) x6 then 2

**Rows 47-49:** 2 ( 6 , 25 , 6 ) x6 then 2

**Row 50:** 2 ( 6 , 11 , 1 , 11 , 6 ) x6 then 2

**Row 51:** 2 ( 8 , 7 , 2 , 2 , 7 , 8 ) x6 then 2

**Row 52:** 2 ( 10 , 1 , 1 , 4 , 4 , 1 , 1 , 10 ) x6 then 2

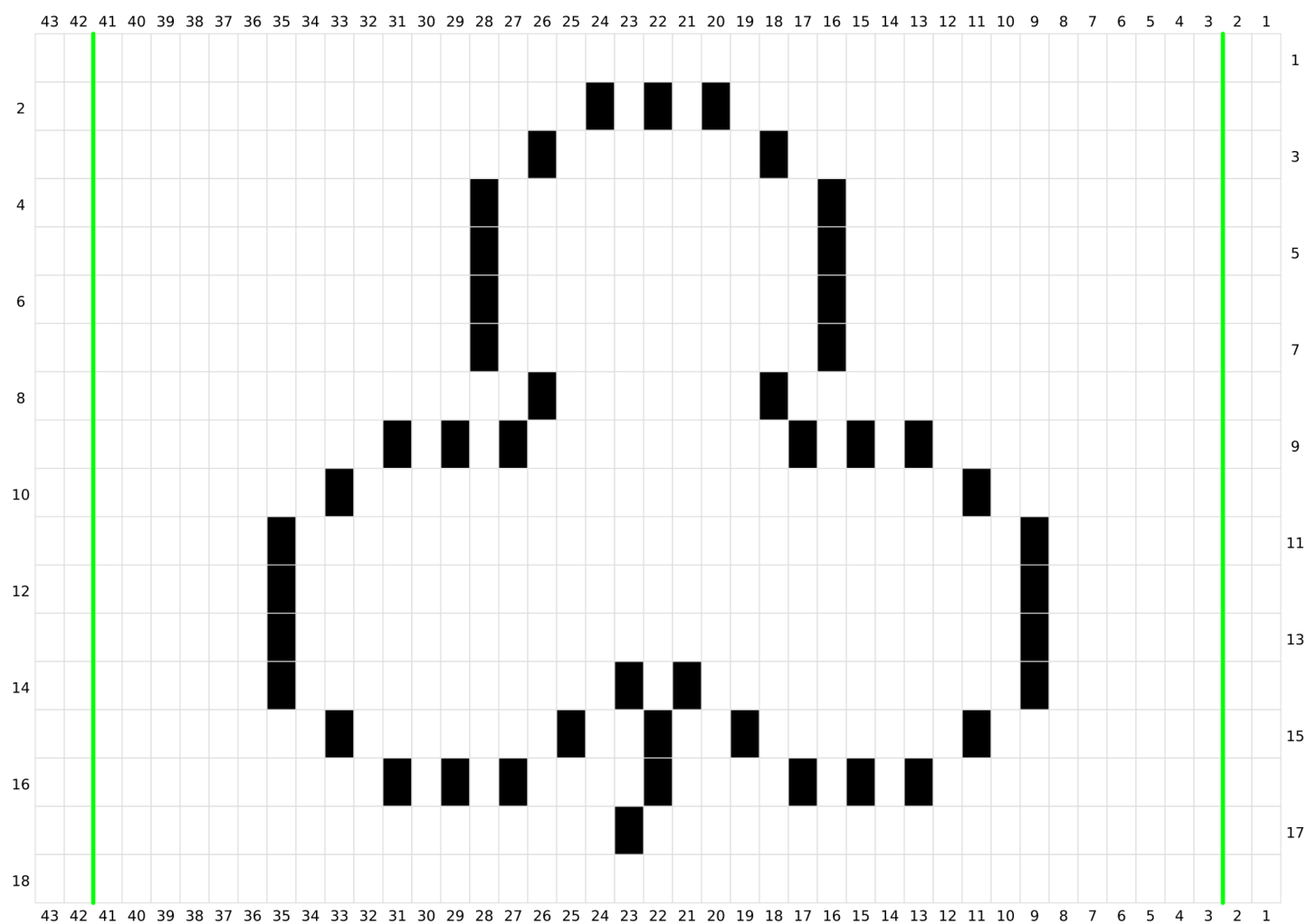
**Row 53:** 2 ( 20 , 18 ) x6 then 2

**Row 54:** Dc across (238 sts). If you're doing one color, put a marker in your blanket so it doesn't unravel. If you plan to change colors, finish off this color now.



Share your CAL progress with us on IG - #2020filetCAL

## 2020 Blanket March Panel Graph



dc



ch1, sk1



repeat ( ) is between the green lines

# ST. PATRICK BLANKET

- Using DK yarn and the specified repeats below, you'll create a blanket approximately 34x45 inches, depending on your tension.
- **Increase or decrease this blanket** in multiples of 35 sts by 18 rows to make ant size.
- **Blanket is worked** from the top of the design down. So, if you want a rainbow, start with red.
- **Place stitch markers during Row 1 in stitches:** 35, 70, and 105.

**Row 1:** FDC 140; in repeats dc across for 140 sts.

Alternately, chain 141 and dc in 3rd ch from hook and in each across. The ch2 at the beginning counts as a dc - 141 sts.

**Row 2:** (15 , 1 , 1 , 15 ) x4

**Row 3:** (13 , 7 , 13 ) x4

**Rows 4-7:** (11 , 11 , 11 ) x4

**Row 8:** (13 , 7 , 13 ) x4

**Row 9:** (8 , 1 , 1 , 9 , 1 , 1 , 8) x4

**Row 10:** (6 , 21 , 6 ) x4

**Rows 11-13:** (4 , 25 , 4 ) x4

**Row 14:** (4 , 11 , 1 , 11 , 4 ) x4

**Row 15:** (6 , 7 , 2 , 2 , 7 , 6 ) x4

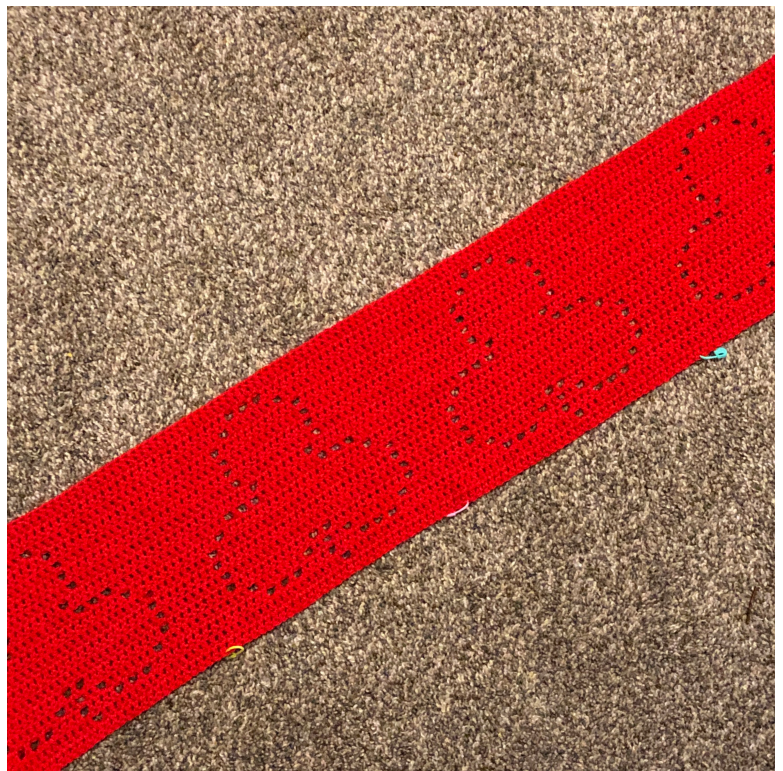
**Row 16:** (8 , 1 , 1 , 4 , 4 , 1 , 1 , 8) x4

**Row 17:** (18 , 16 ) x4

**Row 18:** Dc across (140 sts)

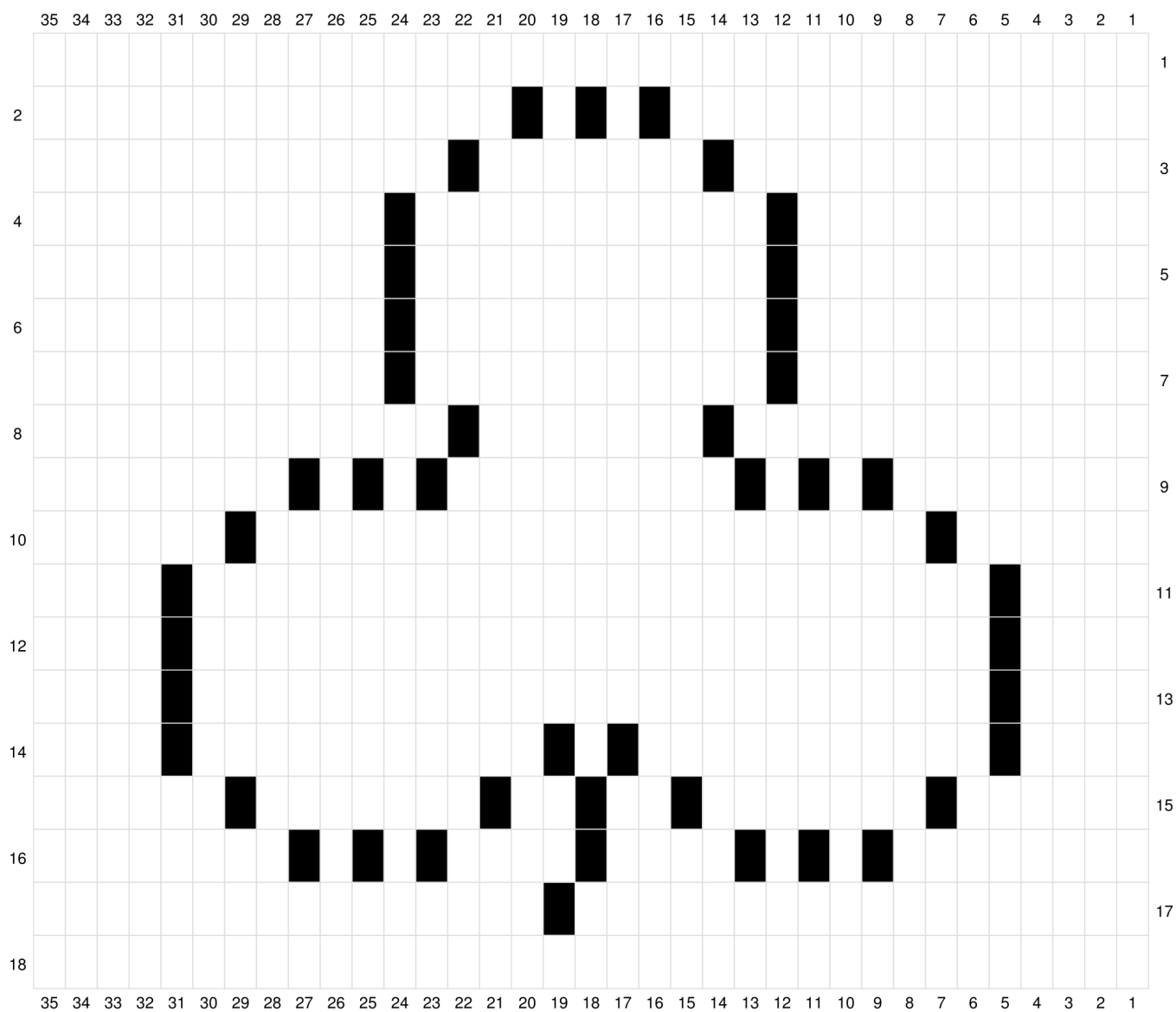
**Repeat Rows1-18** five more times (6 panels of shamrocks).

**Here's the start of mine —>**



# St. Patrick Blanket Graph

Repeat is the entire graph



dc

ch1, sk1

# BLANKET BORDER - 4mm HOOK

Not all hookers will want/need to change hook sizes for their border. It all depends on personal tension and preference. If you don't change sizes and find that your border is wavy, use the smaller hook. If you DO use a smaller hook and it seems bunchy - use a larger hook.

**Rnd 1:** Join border color and start by going down the left side of your blanket by making 2sc around each dc post (or row) down the side. Then you'll do 2sc into the first stitch along the bottom of the blanket (into your FDC or chain), and then sc in each stitch across to the last chain/FDC where you'll do another 2sc (these increases at the ends make the corners). Continue in this manner around your blanket. Join with a slst to your first sc.

**From here, you can get creative with your border (you can literally do anything, there are great border books out there and lots of free ideas too) or go with the super simple dc one below-**

**Rnd 2-4:** Dc around, doing (2dc, ch1, 2dc) in the corners.

**Rnd 5:** Sc around, doing 3sc in the ch1 corners.

\* \* \* \* \*

**Share your CAL progress with us on IG with #2020filetCAL**

**Don't forget to share in our FB Group too!**

\* \* \* \* \*