

#2020FILETCAL - APRIL - APRIL SHOWERS

Designed by Becca Bomgardner
Dutch Translation by Inge van Dam



Every effort has been made to create patterns free of errors. However, I am a human mother of six (ages 12-2). While I WISH crocheting was my full time job, I'm not in that stage of life yet. That said, if you DO find an error please let me know.

Help is available from myself and the other hostesses on both IG and in the FB Group if you get stuck.

Yarn & Supplies

To save ink and paper each month, I'll refer you to the CAL Intro file for more info on yarn amounts for each CAL option.

Terms & Stitches - US Terms

st(s) - stitch(es)

ch - chain

sk - skip

dc - double crochet

sc - single crochet

yo - yarn over

sl st - slip stitch

rep - repeat

Special Stitches

FDC - Foundation Double Crochet

A good tutorial by Gleeful Things: <https://www.youtube.com/watch?v=5t691HnQpBM>

Numerical Filet - "How To" Guide

To save ink and paper each month, I'll refer you to the CAL Intro file where you can find this handy sheet.

NOTE: All 2020 CAL patterns are worked from the TOP of the design down. For the full year blanket design, I wanted January to be at the top. To save me work in pattern writing, all 3 versions work from the top down - which is different than usual filet patterns. This doesn't matter in the over all look of the finished project. But I wanted you to be aware of this difference, because while you work the pictures will be upside down to you. :-)

APRIL SHOWERS BLOCK

Row 1: FDC 43

Alternately, chain 44 and dc in 3rd ch from hook and in each across. The ch2 at the beginning counts as a dc - 43 sts.

Rows 2-3: Dc across (43 sts)

Row 4: 15 , (1 ,) x6 then 15

Row 5: 13 , 15 , 13

Row 6: 11 , 19 , 11

Row 7: 10 , 21 , 10

Rows 8-9: 9 , 23 , 9

Row 10: 10 , (1 ,) x11 then 10

Rows 11-16 (6 rows): 21 , 21

Row 17: 21 , 3 , 17

Row 18: 17 , 3 , 21

Row 19: 22 , 1 , 18

Rows 20-22: Dc across (43 sts); do not finish off!

Row 23/Rnd 1 - Ch1 and rotate (not turn) to work down the left side of your block. *Make 2sc around the post of each dc down the side (44sc). Rotate to work along row. 2sc in first stitch (first sc is the corner - mark it), sc 20, 2sc in next st, sc 20, 2sc in the last stitch (last sc is the corner - mark it)* Repeat between the * then sl st to your first sc and finish off.

Share your CAL progress with us on IG - #2020filetCAL

2020 BLANKET - APRIL PANEL

This pattern is for one panel of a twin-sized bed blanket at approximately 54" by 80" using DK yarn. You will add the rows for each new design every month for a total of 12 different of designs and 214 rows. In December border instructions will be included to finish your blanket.

...Continued from March-

Place stitch markers as you make Row 55 in stitches 5, 34, 63, 92, 121, 150, 179, 208, and 237

Row 55: Dc across

Row 56: 1 (10 , (1 ,) x6 , 6) x8 then 5

Row 57: 5 (4 , 15 , 8) x8 then 1

Row 58: 1 (6 , 19 , 2) x8 then 5

Row 59: 5 (1 , 21 , 5) x8 then 1

Row 60: 1 (4 , 23 ,) x8 then 5

Row 61: 5 (, 23 , 4) x8 then 1

Row 62: 1 (5 , (1 ,) x11 then 1) x8 then 5

Row 63: 5 (12 , 16) x8 then 1

Row 64: 1 (16 , 12) x8 then 5

Row 65: 5 (12 , 16) x8 then 1

Row 66: 1 (16 , 12) x8 then 5

Row 67: 5 (12 , 16) x8 then 1

Row 68: 1 (16 , 12) x8 then 5

Row 69: 5 (12 , 3 , 12) x8 then 1

Row 70: 1 (12 , 3 , 12) x8 then 5

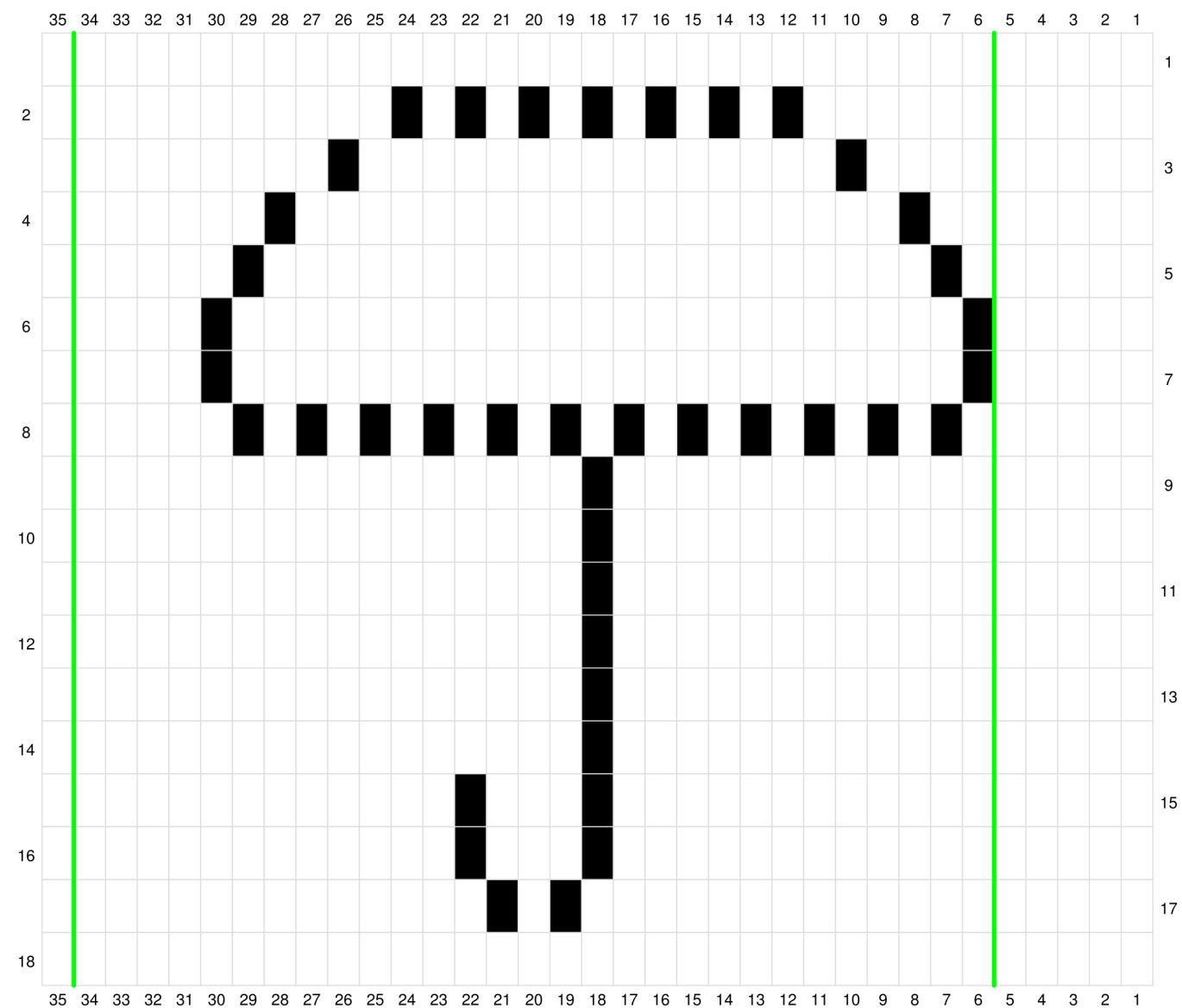
Row 71: 5 (13 , 1 , 13) x8 then 1

Row 72: Dc across (238 sts). If you're doing one color, put a marker in your blanket so it doesn't unravel. If you plan to change colors, finish off this color now.



Share your CAL progress with us on IG - #2020filetCAL

2020 Blanket April Panel Graph



dc

ch1, sk1

Repeat is between green lines

APRIL SHOWERS BLANKET

Using DK yarn and the specified repeats below, you'll create a throw size blanket approximately 36 by 44 inches, depending on your tension. This pattern can be increased or decreased in multiples of 29 + 4 sts across and 18 rows.

Yarn Needed

- 6 colors of DK yarn in rainbow colors - approximately 100g or 322 yards each color
- White DK yarn - approximately 3 100g balls or 966 yards

Blanket is worked TOP DOWN - so if you're following the example, then begin with pink/red.

Place stitch markers during each Row 1 in stitches 4, 33, 62, 91, and 120

Row 1: FDC 149; in repeats just dc across for 149 sts.

Alternately, chain 150 and dc in 3rd ch from hook and in each across. The ch2 at the beginning counts as a dc - 149 sts.

Row 2: (10 , (1 ,) x6 then 6) x5 then 4

Row 3: 4 (4 , 15 , 8) x5

Row 4: (6 , 19 , 2) x5 then 4

Row 5: 4 (1 , 21 , 5) x5

Row 6: (4 , 23 ,) x5 then 4

Row 7: 4 (, 23 , 4) x5

Row 8: (5 , (1 ,) x11) x5 then 4

Row 9: 4 (12 , 16) x5

Row 10: (16 , 12) x5 then 4

Row 11: 4 (12 , 16) x5

Row 12: (16 , 12) x5 then 4

Row 13: 4 (12 , 16) x5

Row 14: (16 , 12) x5 then 4

Row 15: 4 (12 , 3 , 12) x5

Row 16: (12 , 3 , 12) x5 then 4

Row 17: 4 (13 , 1 , 13) x5

Row 18: Dc across (149 sts)



Bobble Panel -

Remove stitch markers, you don't need them for this panel.

Bobble Stitch (uses 2 sts) - *yo, insert hook into stitch and pull up a loop, yo and pull through two loops on hook* repeat between * 4 more times - you'll have 6 loops on your hook. Yo and pull through all 6 loops. Sc in the next stitch.

Your bobble will "pop" out on the side not facing you. This becomes the front side of your blanket. Be sure to **start** every next panel with the previous bobbles facing you, this will make all bobble panels face correctly and all umbrella handles face the same direction too.

Row 1: Join white yarn and sc across (149 sts), then ch1 and turn.

***Row 2:** Sc in the first st, then bobble stitch across. Ch1 and turn.

Row 3: Sc across (149 sts). Ch1 and turn.

***Row 4:** Sc in the first 2 sts, then bobble stitch across until you have 1 st remaining, sc in this last st. Ch1 and turn.

Row 5: Sc across (149 sts). Ch1 and turn.

***Row 6:** Sc in the first st, bobble stitch across. Ch1 and turn.

Row 7: Sc across (149 sts). Ch1 and turn.

***Have an EVEN stitch width?**

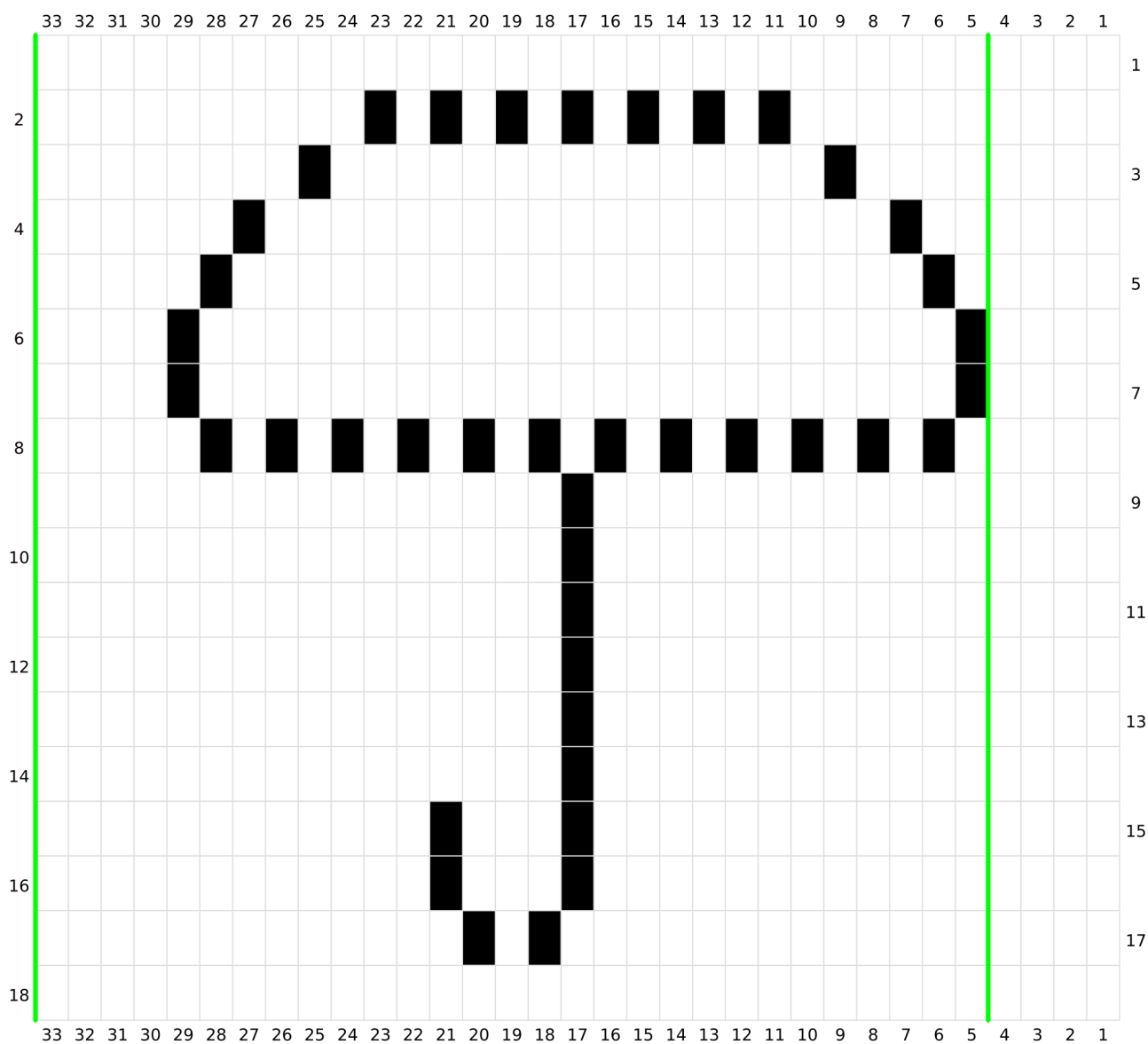
Bobbles need an odd stitch count to work properly. If you increased/decrease your blanket size, you may have an even stitch width. If you have an EVEN stitch width, follow the instructions below for the asterisked rows above.

Row 2 & 6: Sc in the first 2 sts, then bobble stitch across. Ch1 and turn.

Row 4: Sc in the first 3 sts, then bobble stitch across until you have 1 st remaining, sc in this last st. Ch1 and turn.

Repeat the Umbrella & then the Bobble panels 5 more times, then repeat just the umbrellas once more. You should have 7 panels of umbrellas with bobble panels in between them.

April Showers Blanket Graph



dc



ch1, sk1

Repeat is between green lines

APRIL SHOWERS BLANKET BORDER

Rnd 1 (in white): Join white yarn to the top left side of your blanket and start by going down the side of your blanket by making 2sc around each dc post (or row) down the side (**do only ONE sc into the ends of the bobble panel rows - this will be 5 sc spaced along the bobble panels**) Then you'll do 2sc into the first stitch along the bottom of the blanket (into the bottom of your FDC or chain), and then sc in each stitch across to the last chain/FDC where you'll do another 2sc (these increases at the ends make the corners). Continue in this manner around your blanket. Join with a slst to your first sc.

You're now set up to border any way you like, or follow the very simple dc border below.

Rnd 2: Ch3 (counts as a dc), dc in next stitch and all stitches around, doing (2dc, ch1, 2dc) in the corners.

Rnd 3: sc around, doing 3 sc in the corners.



Tag your blankets #aprilshowersblanket

Share your CAL progress with us on IG with #2020filetCAL

Don't forget to share in our FB Group too!

